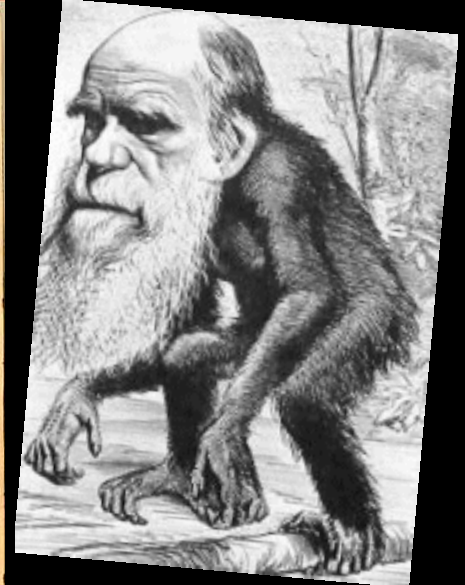
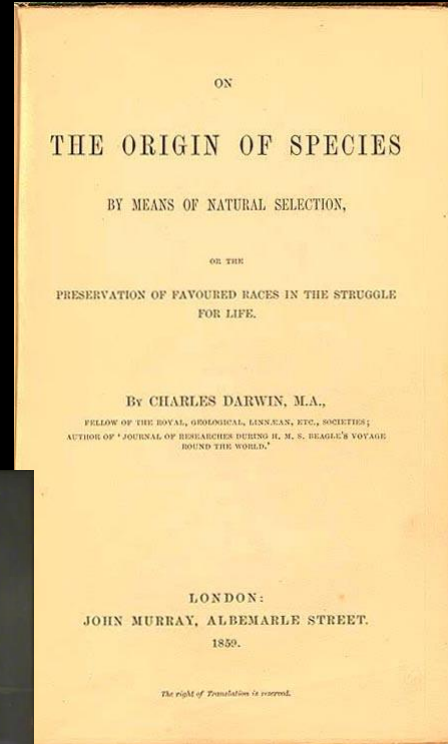
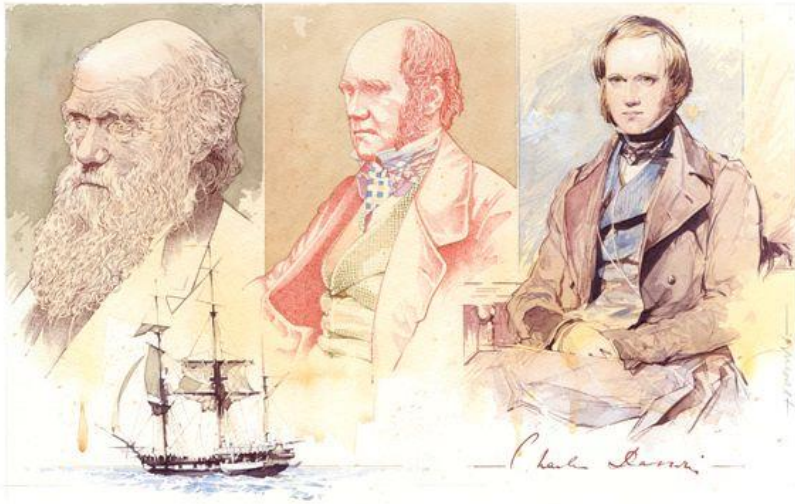


***“Light will be thrown on the origin of man and his history.”***



1854

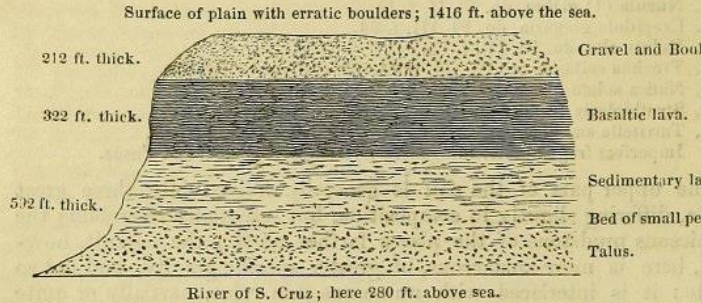
**Charles Darwin (1809–1882), Sir Charles Lyell (1797–1875), and Joseph Dalton Hooker (1817–1911). Victor Eustaphieff.**



•LATE AUTUMN•

eighty miles from the coast,\* in a cliff thus composed, there are a few layers of ferruginous sandstone, and of an argillaceous sandstone with concretions of marl like those in the Pampas. At a few miles from the coast, that is at a central point between the Atlatra and the Cordillera, we have the following section.

No. 18.—SECTION OF THE PLAINS OF PATAGONIA, ON THE BANK OF THE S. CRUZ.

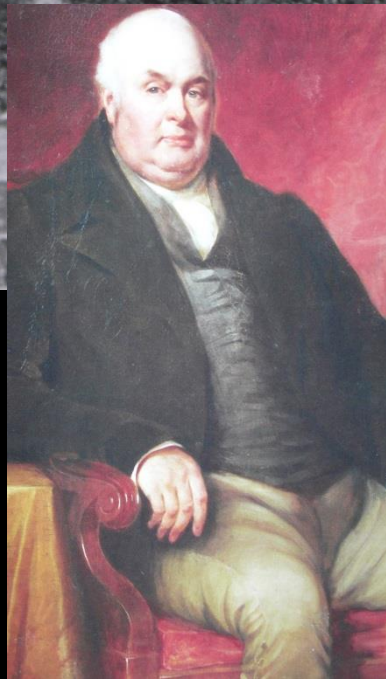
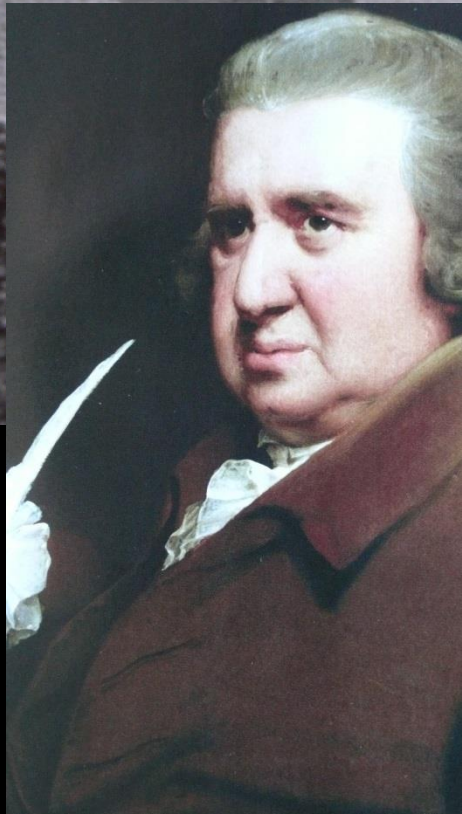


The upper half of the sedimentary mass, under the basaltic lava, consists of innumerable zones of perfectly white, bright green, yellow and brownish, fine-grained, sometimes incoherent, sedimentary marls. The white, pumiceous, trachytic tuff-like varieties are of rather great specific gravity than the pumiceous mudstone on the coast to the north. In some of the layers, especially the browner ones, are coarser, so that the broken crystals are distinguishable with a weak lens. The layers vary in character in short distances. With the exception of a few of the *Ostrea Patagonica*, which appeared to have rolled down from the cliff above, no organic remains were found. The chief difference between these layers taken as a whole, and the upper beds both at the mouth of the river and on the coast northward, seems to lie in the occasional presence of more colouring matter, and in the supply having been intermittent; these characters, as we have seen, very gradually disappear in descending the valley, and this fact may perhaps be accounted for, by the currents of a more open sea having blended together the sediment from a distant and intermittent source.

The coloured layers in the foregoing section rest on a mass, apparently of great thickness (but much hidden by the talus), of soft

\* At this spot, for a space of three quarters of a mile along the north side of the river, and for a width of half a mile, there has been a great slip, which has formed hills between 60 and 70 feet in height, and has tilted the strata into highly inclined and even vertical positions. The strata generally dipped at an angle of 45° towards the cliff from which they had slid. I have observed in slips, both on a small and large scale, that this inward dip is very general. Is it due to the hydrostatic pressure of water percolating with difficulty through the strata, acting with greater force at the base of the mass than against the upper part?





The Mount. Shrewsbury





Charles Darwin con seis años junto a su hermana Catherine



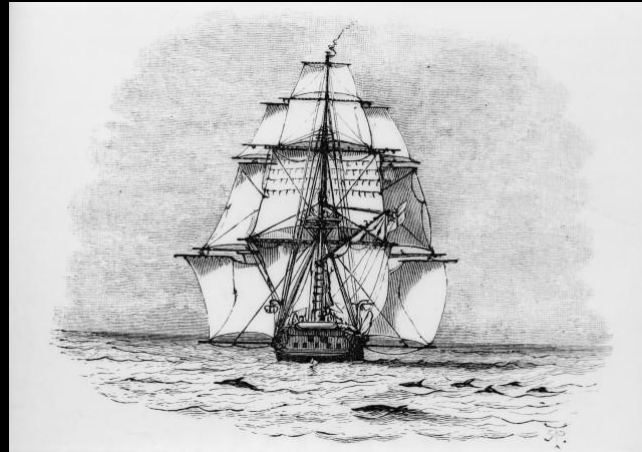








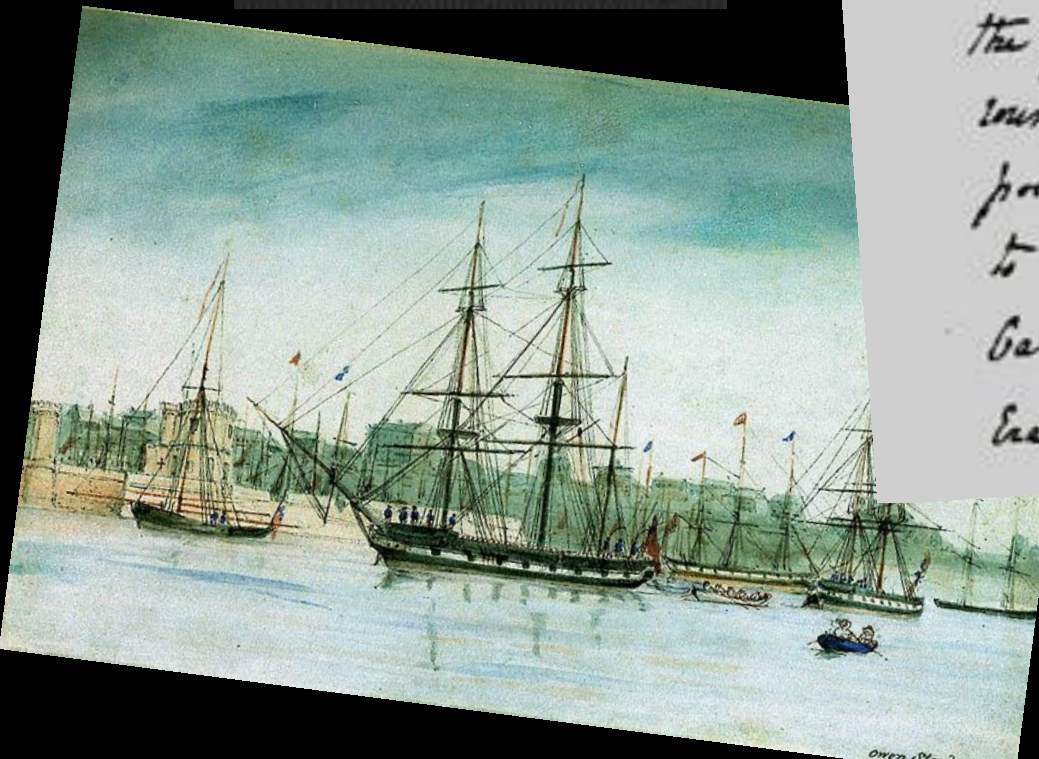
*Robert Fitz Roy (1805-1865)*





1831. - (Sept. 29.) - Appointed to be one of the Domestic Chaplains of Dr. Malby, then just raised to the Episcopal Bench, & first Bp. of Winchester, afterwards Bp. of Durham. -

This year I had the offer of accompanying Capt. Fitzroy, as Naturalist, in the Beagle, in his voyage to survey the coasts of S. America, afterwards going round the globe: - declined the appointment, which was afterwards given to Charles Darwin, Esq. of King's College Cambridge, grandson of the celebrated Erasmus Darwin, author of the "Zoonomia".



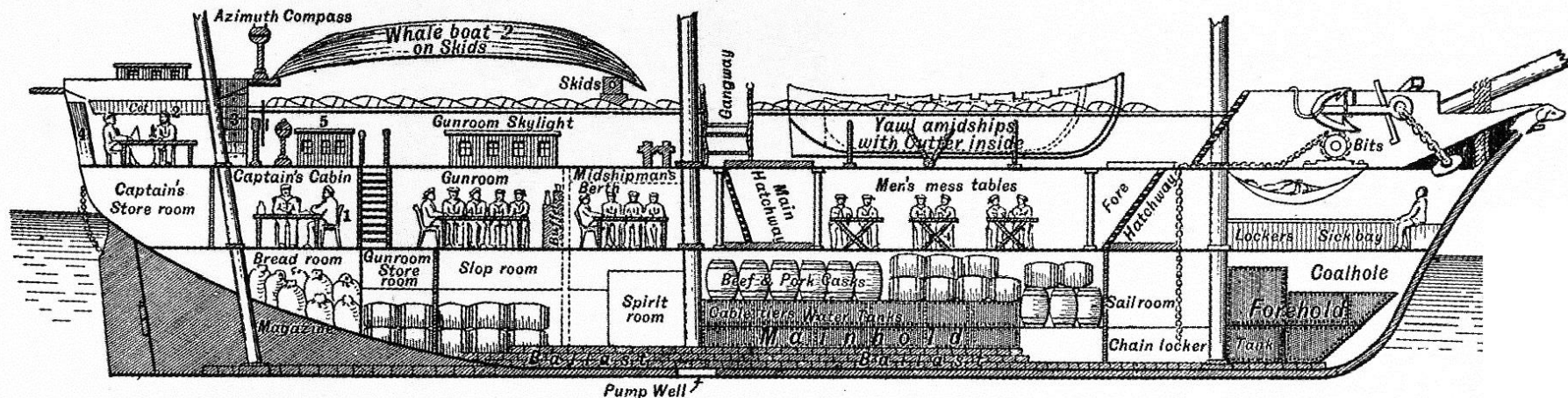
Leonard Jenyns (1800-1893)



# H.M.S. BEAGLE

MIDDLE SECTION FORE AND AFT

1832



1. Mr. Darwin's Seat in Captain's Cabin

2. Mr. Darwin's Seat in Poop Cabin with Cot slung behind him

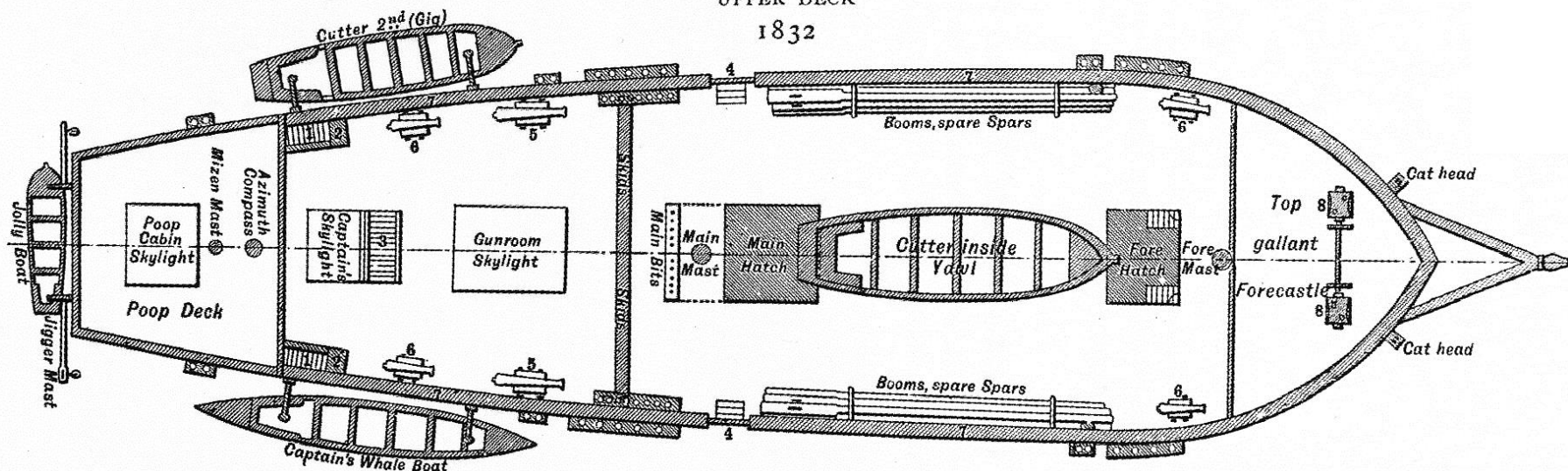
3. Mr. Darwin's Chest of Drawers

4. Bookcase

5. Captain's Skylight

UPPER DECK

1832



1. Poop Ladders

3. After Companion

5. Brass nine pounders, Captain's private property

7. Hammock Nettings

2. Signal Flag Lockers

4. Gangways

6. Six pounders

8. Patent Windlass









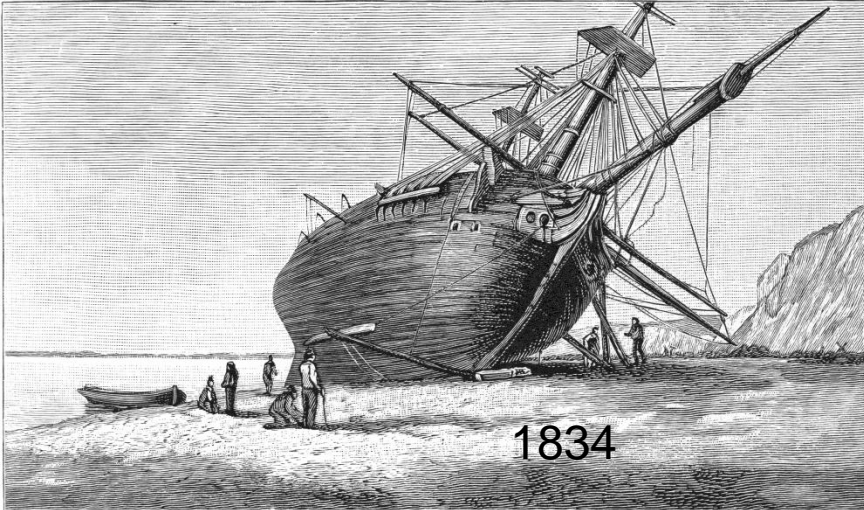




*Rhea Darwinii*

*A species of South American Ostrich found in  
Eastern Patagonia*



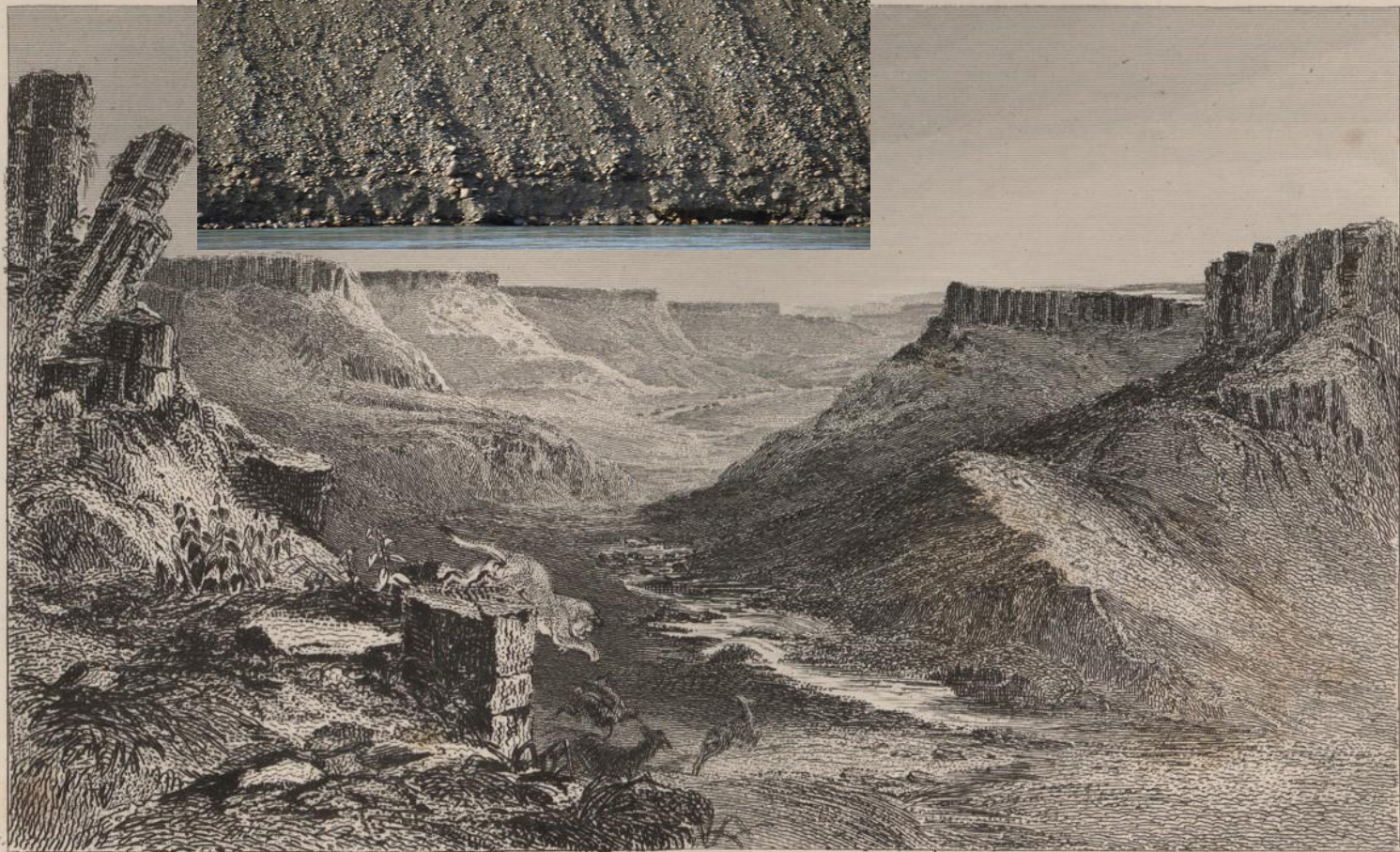


1834

THE BEAGLE LAID ASHORE, RIVER SANTA CRUZ







BASALT GLEN.—RIVER SANTA CRUZ.

Published by Henry Colburn, Great Marlborough Street, 1833.















Fig. 514.

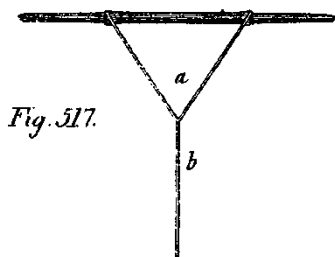
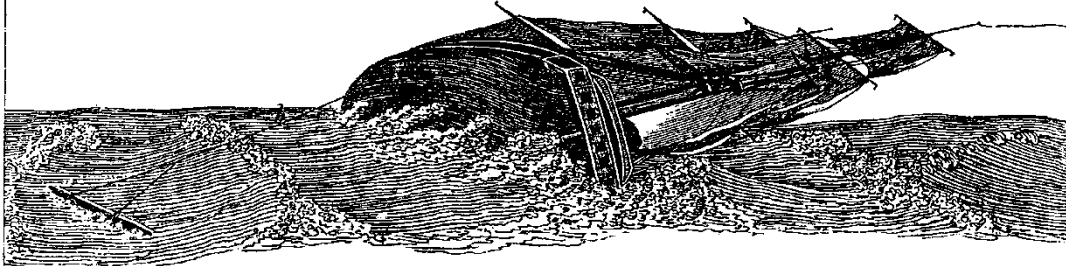


Fig. 517.

Fig. 515.

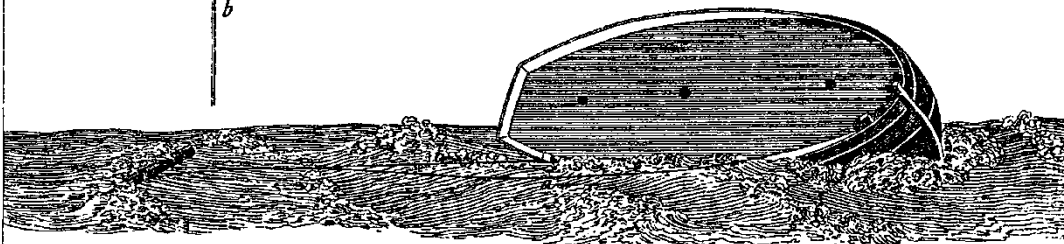
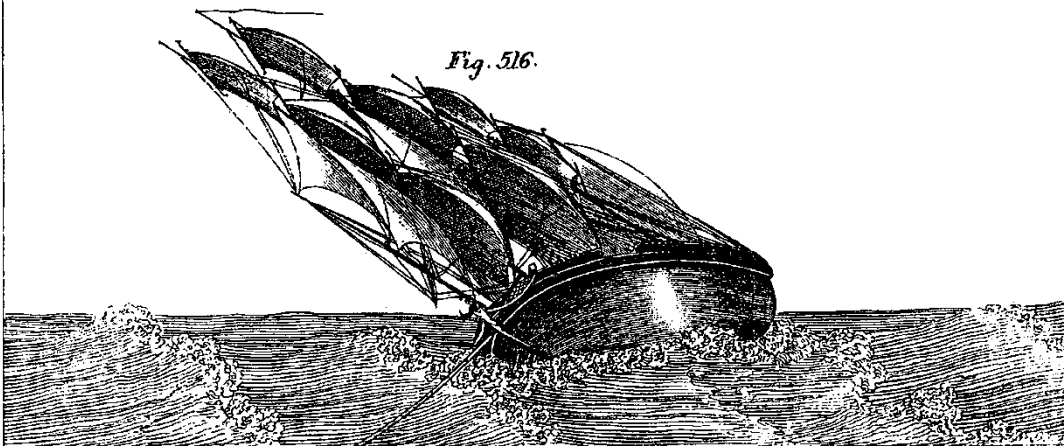


Fig. 516.





**1831**

Jemmy Button (ex Orundelico)



**1834**

Orundelico (ex Jemmy Button)









*Geospiza macurus*

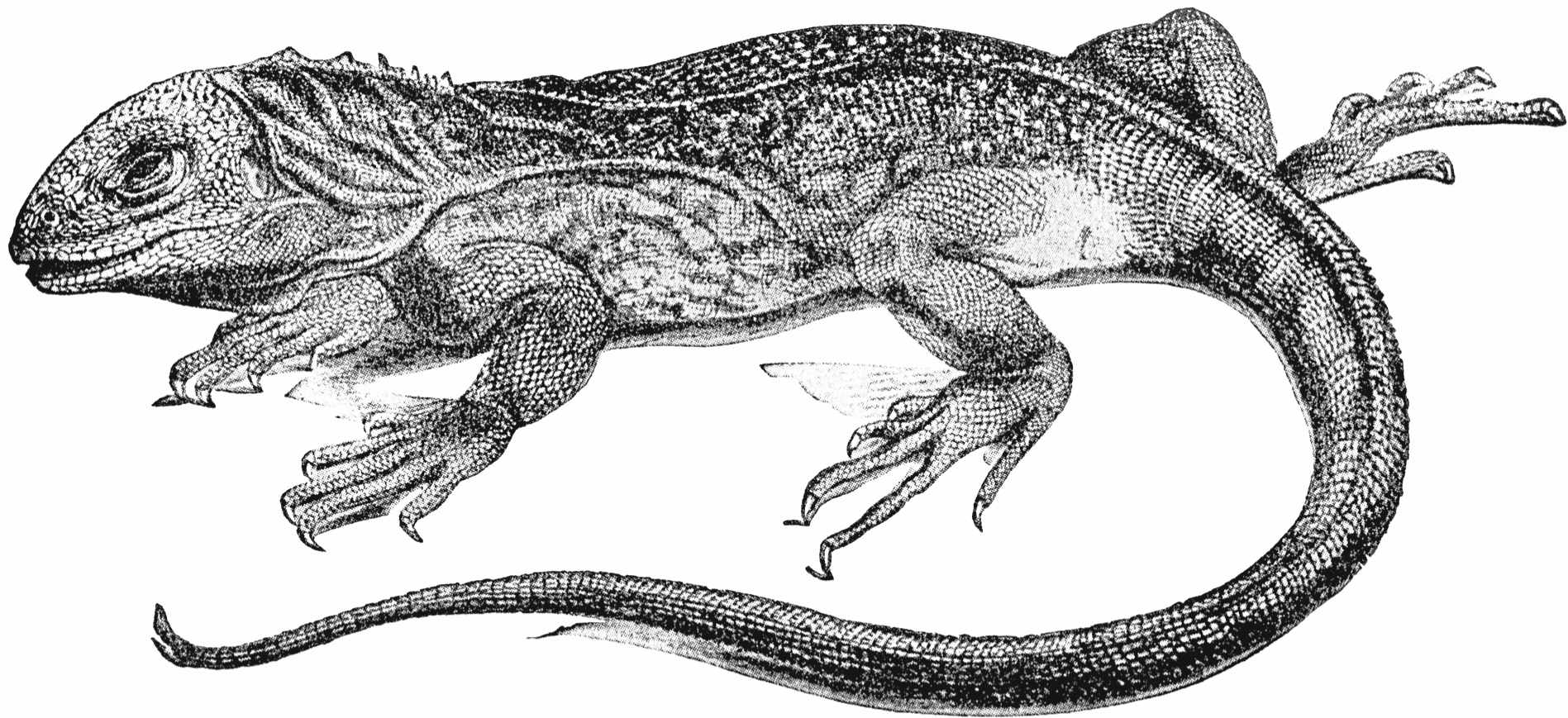


- 1 *Contida olivacea mentalis*
- 2 *Camarhynchus heliobates*
- 3 *Camarhynchus pallidus*
- 4 *Geospiza propinqua* ♀
- 5 *Geospiza conirostris* ♀

- 6 *Geospiza scandens*
- 7 *Camarhynchus crossirostris*
- 8 *Camarhynchus psittacula*
- 9 *Geospiza fuliginosa*
- 10 *Geospiza difficilis*

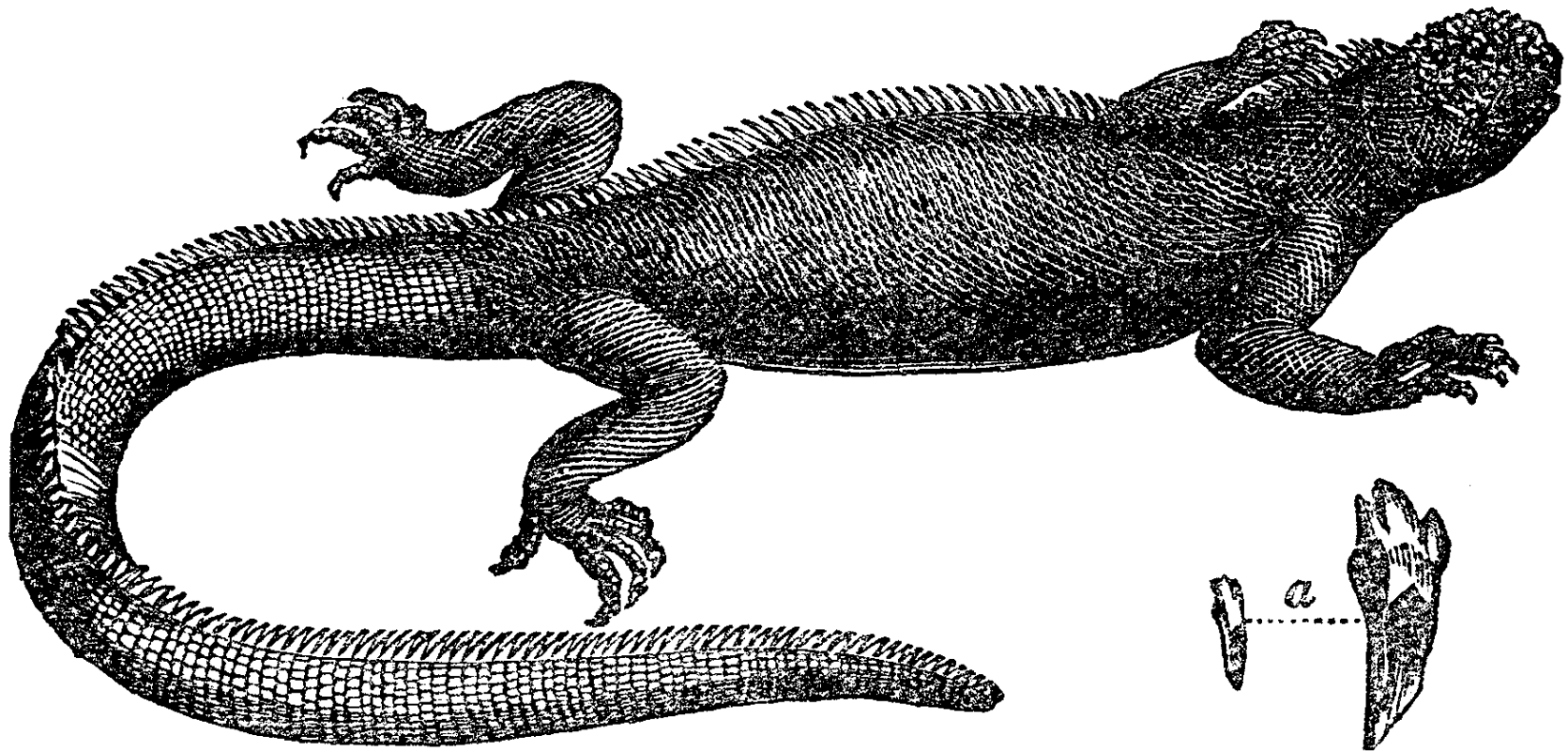
- 11 *Camarhynchus parvulus*
- 12 *Geospiza macrinostriis*
- 13 *Camarhynchus pauper* ♀
- 14 *Geospiza fortis* ♀ ♂





*Amblyrynchus Demarllii*

*A species of Lizard found on some of the Islands of the  
Galapagos Archipelago*



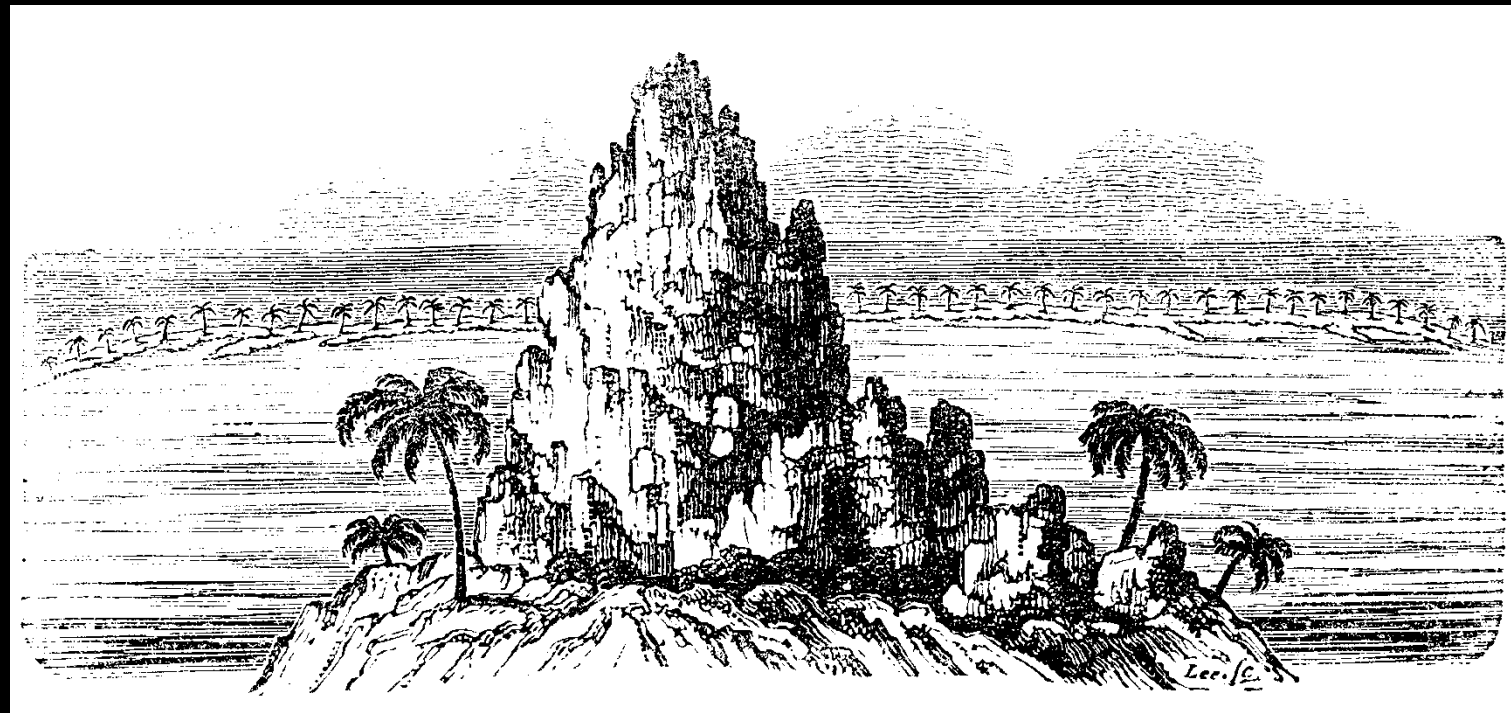
*Amblyrhynchus cristatus*.  $\alpha$ , Tooth of, natural size, and likewise magnified.

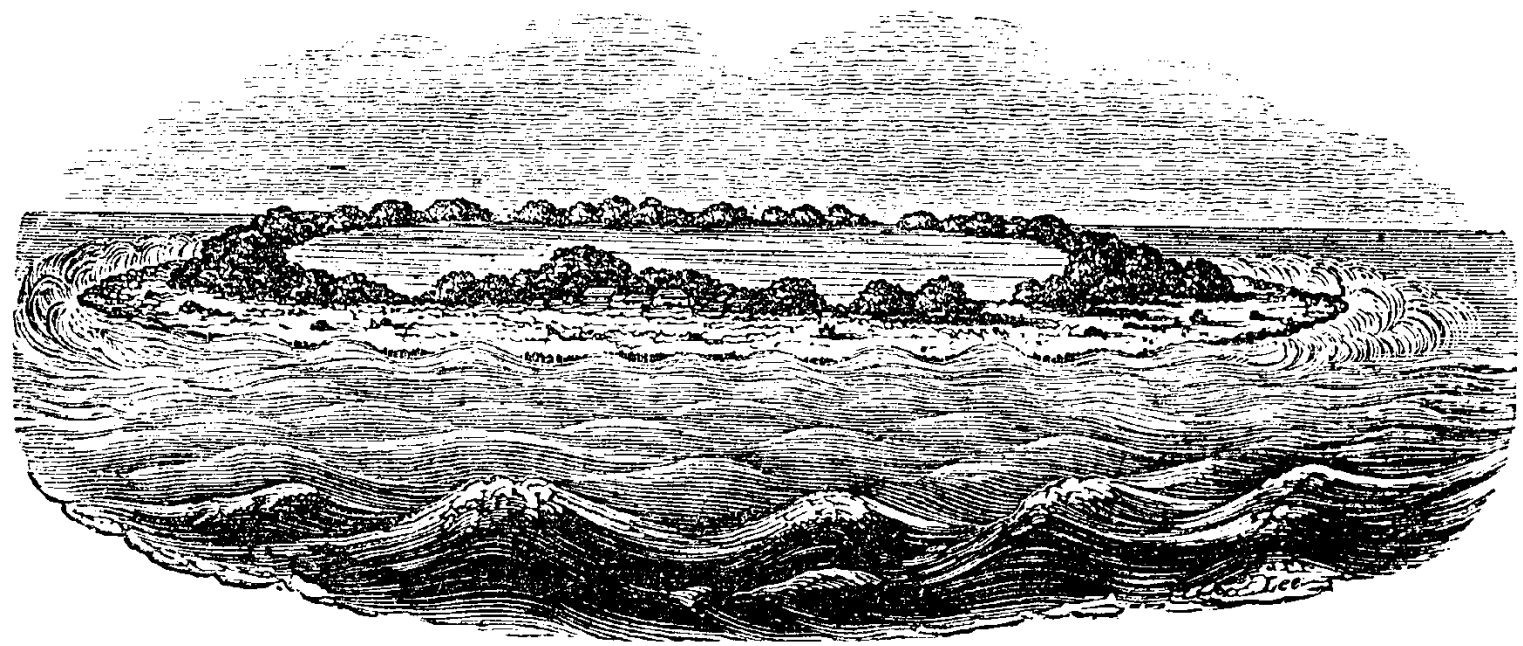




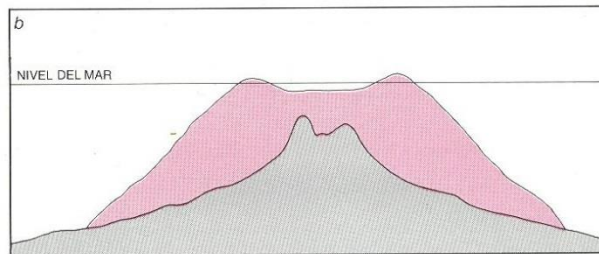
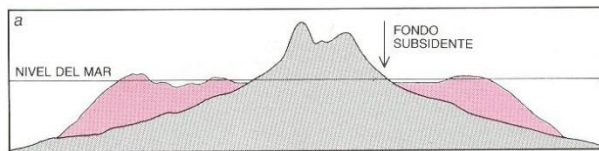
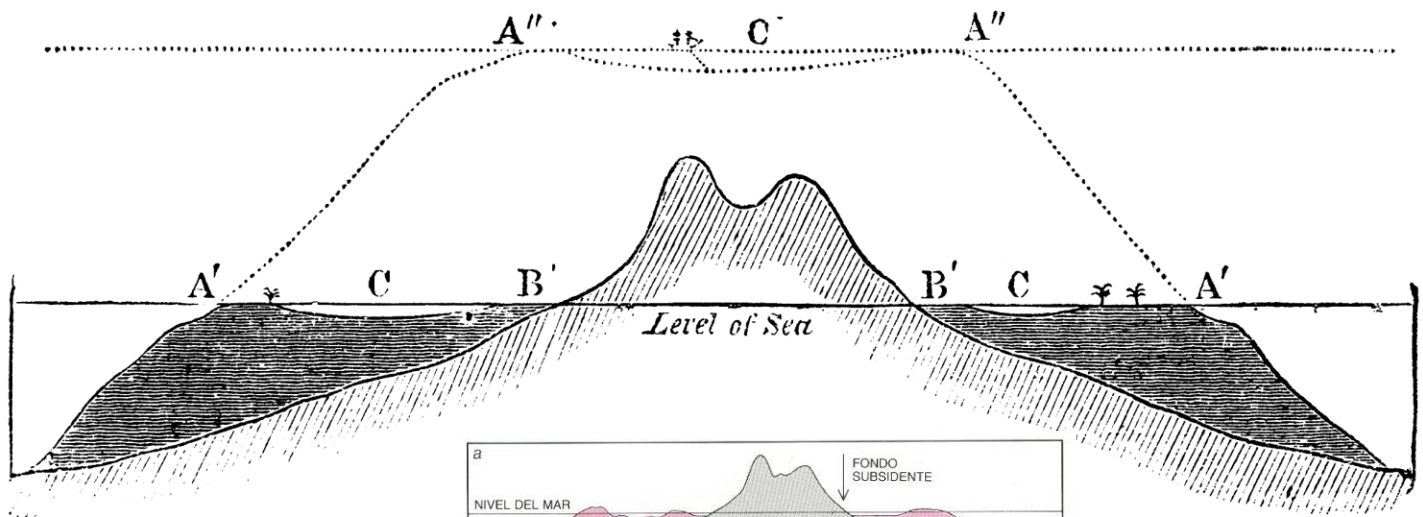
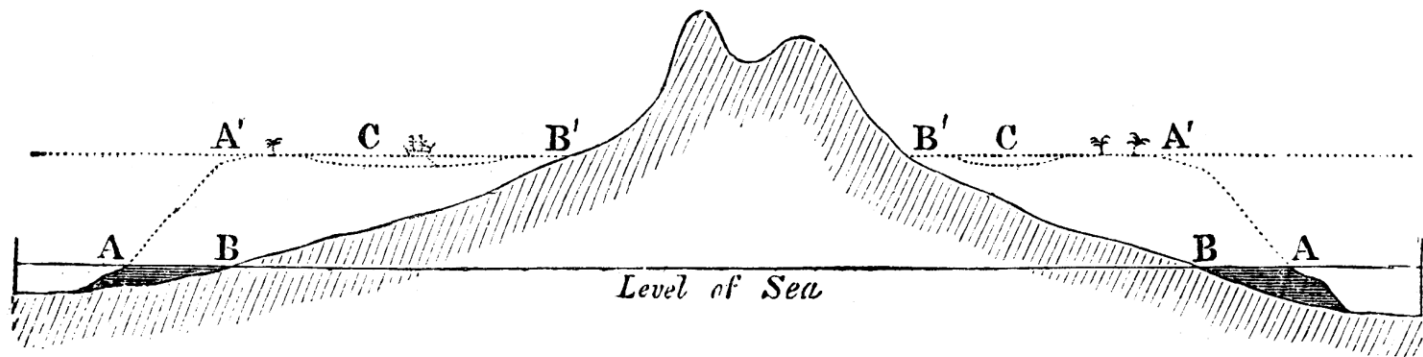


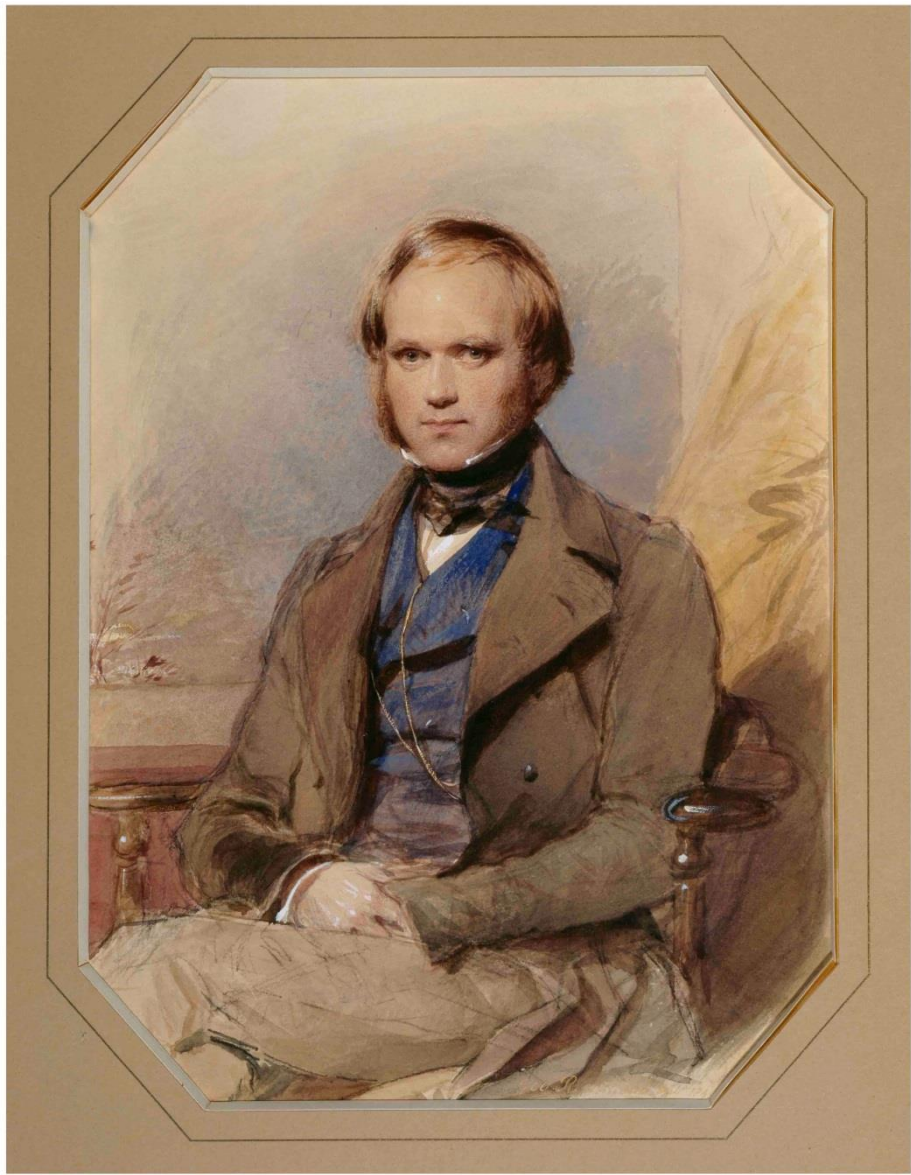












1840

*Harriet Anne Peck  
from Capt. Fitzroy*

VOLUME III.  
—  
JOURNAL AND REMARKS.  
1832—1845.  
—  
BY  
CHARLES DARWIN, ESQ., M.A.  
—  
SEC. 1859, 1861.

JOURNAL OF RESEARCHES

INTO THE

GEOLOGY

AND

NATURAL HISTORY

OF THE

VARIOUS COUNTRIES

VISITED BY H. M. S. BEAGLE,

UNDER THE COMMAND OF CAPTAIN FITZROY, R.N.

FROM 1832 TO 1845.

BY

CHARLES DARWIN, Esq., M.A. F.R.S.

SECRETARY TO THE GEOLOGICAL SOCIETY.

LONDON:

HENRY COLBURN, GREAT MARLBOROUGH STREET.

1845.

I think



Then between A & B. various  
sort of relation. C + B. The  
first predation, B + D  
rather greater distance  
than former would be  
formed. - binary relation

Notebook "B" (1837/1838)

ON

THE ORIGIN OF SPECIES

BY MEANS OF NATURAL SELECTION,

OR THE

PRESERVATION OF FAVOURED RACES IN THE STRUGGLE  
FOR LIFE.

By CHARLES DARWIN, M.A.,

FELLOW OF THE ROYAL, GEOLOGICAL, LINSÆAN, ETC., SOCIETIES;  
AUTHOR OF 'JOURNAL OF RESEARCHES DURING H. M. S. BEAGLE'S VOYAGE  
ROUND THE WORLD.'

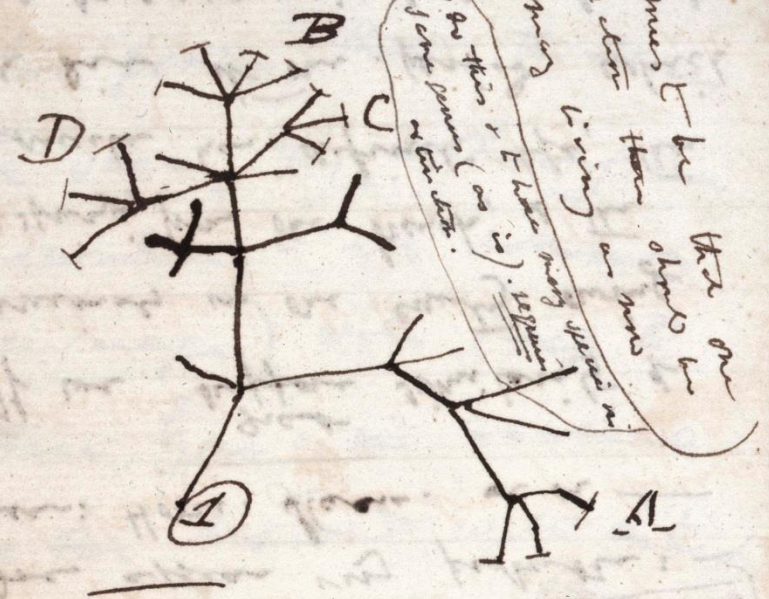
LONDON:

JOHN MURRAY, ALBEMARLE STREET.

1859.

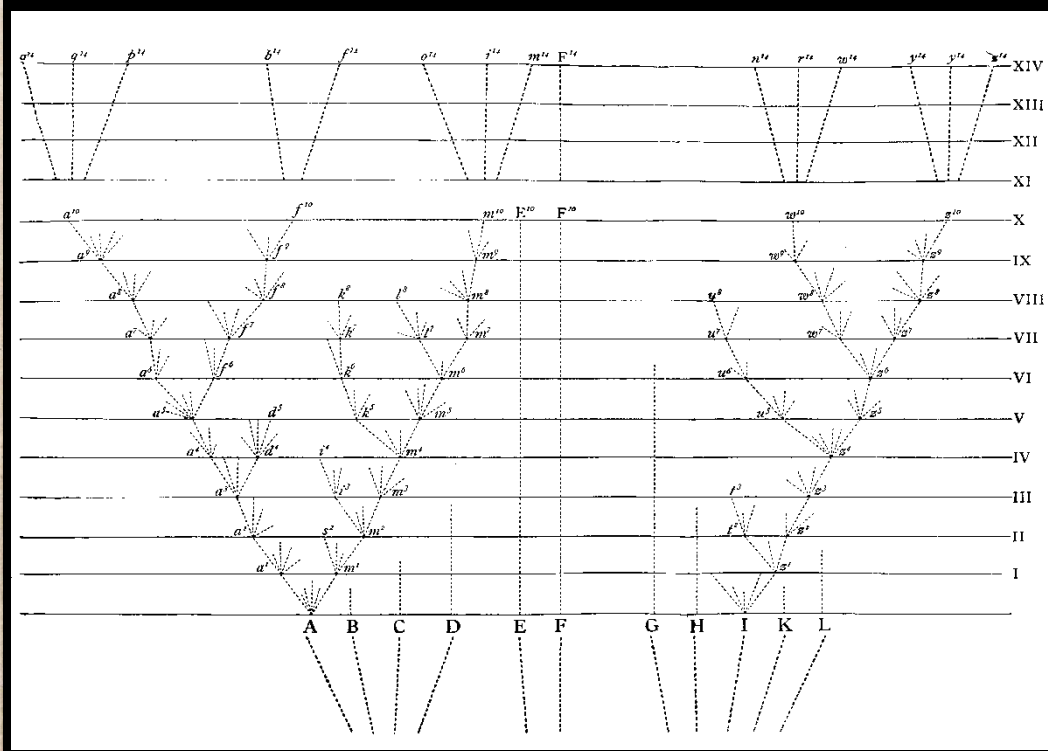
*The right of Translation is reserved.*

I think



There between A & B. various  
 sort of relation. C + B. The  
 finest gradation, B & D  
 rather greater distinction  
 than genus would be  
 formed. - bearing relation

# Notebook "B" (1837-1838)



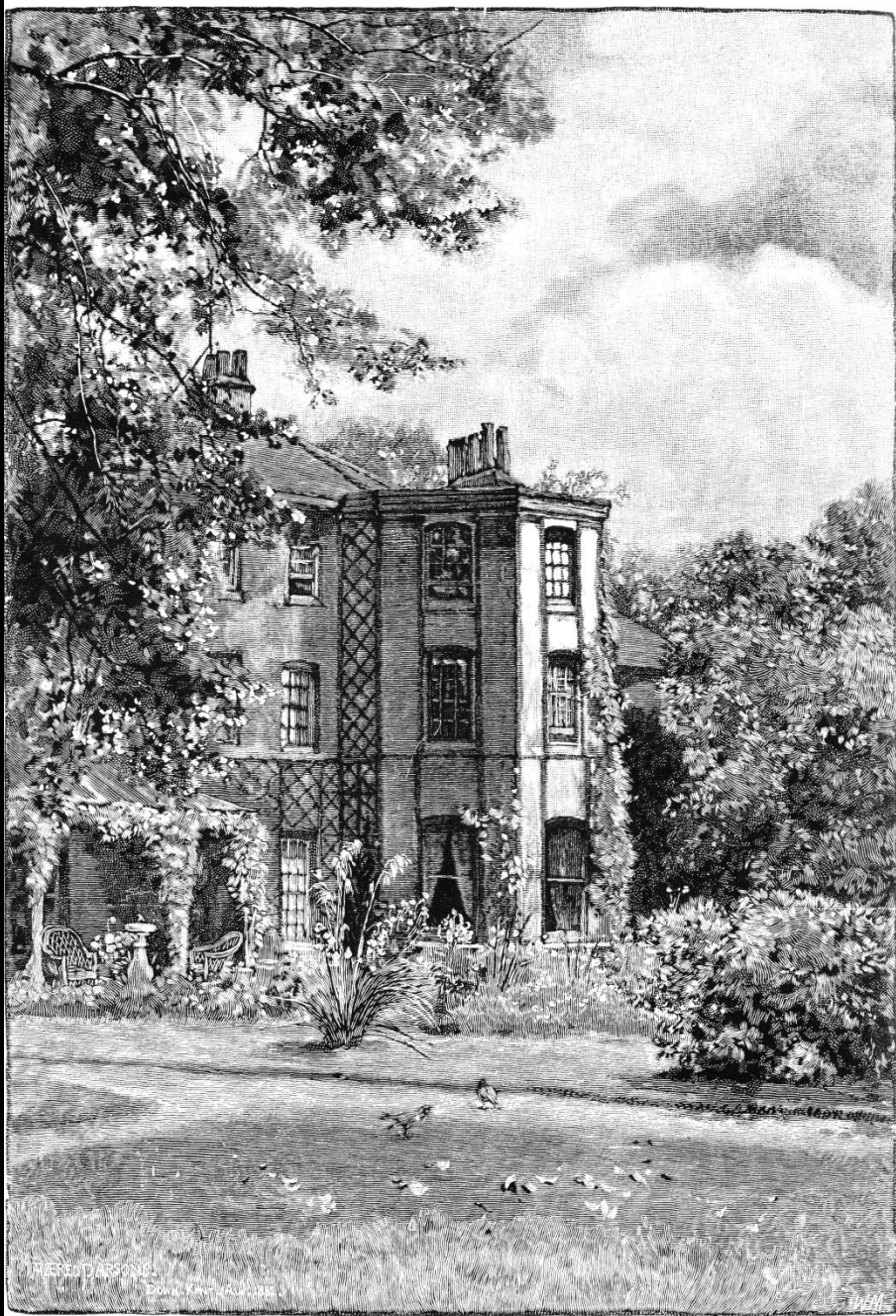
# On the Origin of the Species (1859)



Julio 1842. Down House, Downe, Kent



“At night I experienced an attack (for it deserves no less a name) of the Benchuca, a species of Reduvius, the great black bug of Pampas. It is most disgusting to feel soft wingless insects, about an inch long, crawling all over one’s body.” Diary, March of 1835.



DOWN HOUSE, FROM THE GARDEN.

[From the *Century Magazine*.]







THE STUDY AT DOWN.









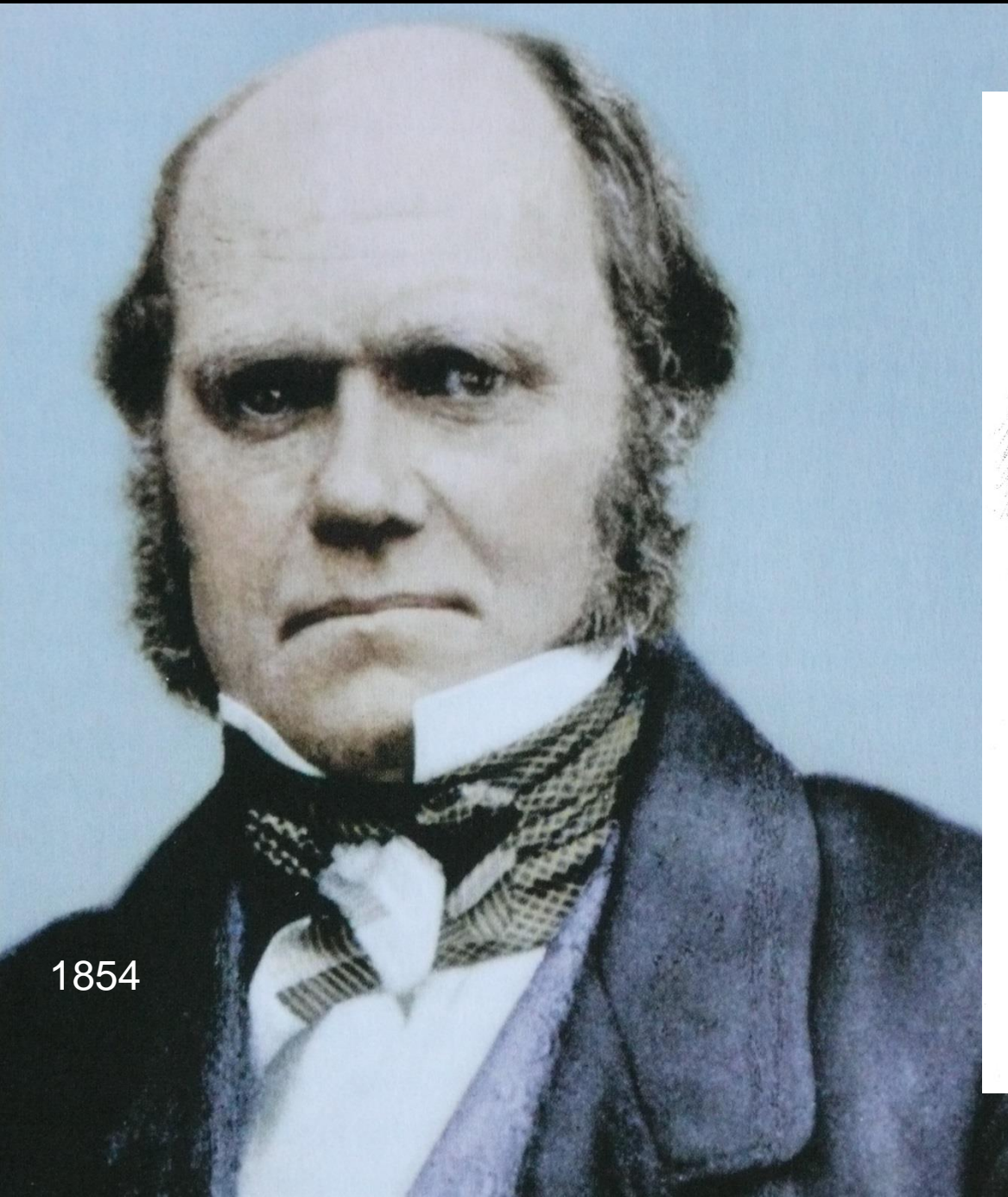
Charles Darwin (33 años)  
con su primogénito William  
(1842)



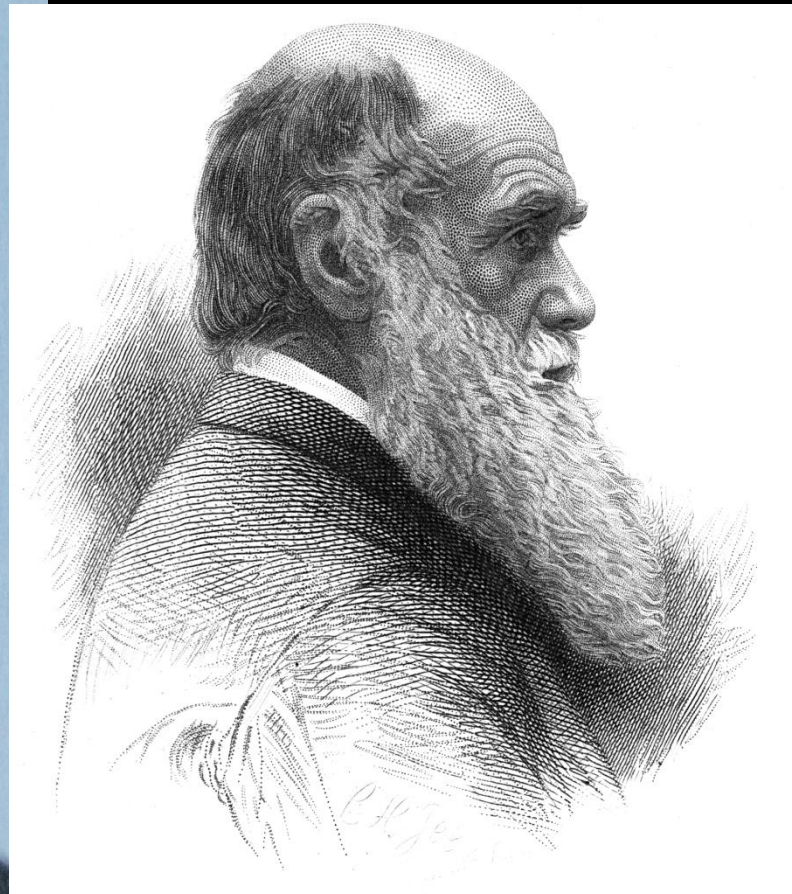
1841-1851

A n n i e





1854



*Ch. Darwin*



JOURNAL OF THE PROCEEDINGS  
OF THE  
LINNEAN SOCIETY.

VOL. III.

ZOOLOGY.

No. 9.

## CONTENTS.

	Page
I. On the Importance of an Examination of the Structure of the Integument of Crustacea in the determination of doubtful Species.—Application to the genus <i>Galathea</i> , with the Description of a New Species of that Genus. By C. SEENCE BATE, Esq., F.L.S. . . . .	1
II. Catalogue of Hymenopterous Insects collected at Celebes by Mr. A. R. WALLACE. By FREDERICK SMITH, Esq., Assistant in the Zoological Department, British Museum. Communicated by W. W. SAUNDERS, Esq., F.R.S., V.P.L.S. . . . .	4
III. Description of a new Genus of Crustacea, of the Family Pinnotheridæ; in which the fifth pair of legs are reduced to an almost imperceptible rudiment. By THOMAS BELL, Esq., Pres. L.S. . . . .	27
IV. Death of the Common Hive Bee, supposed to be occasioned by a parasitic Fungus. By the Rev. HENRY HIGGINS. Communicated by the PRESIDENT . . . .	29
V. Notice of the occurrence of recent Worm Tracks in the Upper Part of the London Clay Formation near Highgate. By JOHN W. WETHERELL, Esq. Communicated by JAMES YATES, Esq., M.A., F.L.S. . . . .	31
VI. Natural-History Extracts from the Journal of Captain Denham, H.M. Surveying Vessel 'Herald,' 1857. Communicated by Captain WASHINGTON, through the Secretary . . . . .	32
VII. On some points in the Anatomy of <i>Nautilus pompilius</i> . By T. H. HUXLEY, Esq., F.R.S., Professor of Natural History, Government School of Mines . . . . .	36
VIII. On the Tendency of Species to form Varieties; and on the Perpetuation of Varieties and Species by Natural Means of Selection. By CHARLES DARWIN, Esq., F.R.S., F.L.S. & F.G.S., and ALFRED R. WALLACE, Esq. Communicated by Sir CHARLES LYELL, F.R.S., F.L.S., and J. D. HOOKER, Esq., M.D., V.P.R.S., F.L.S., &c.	45

LONDON:

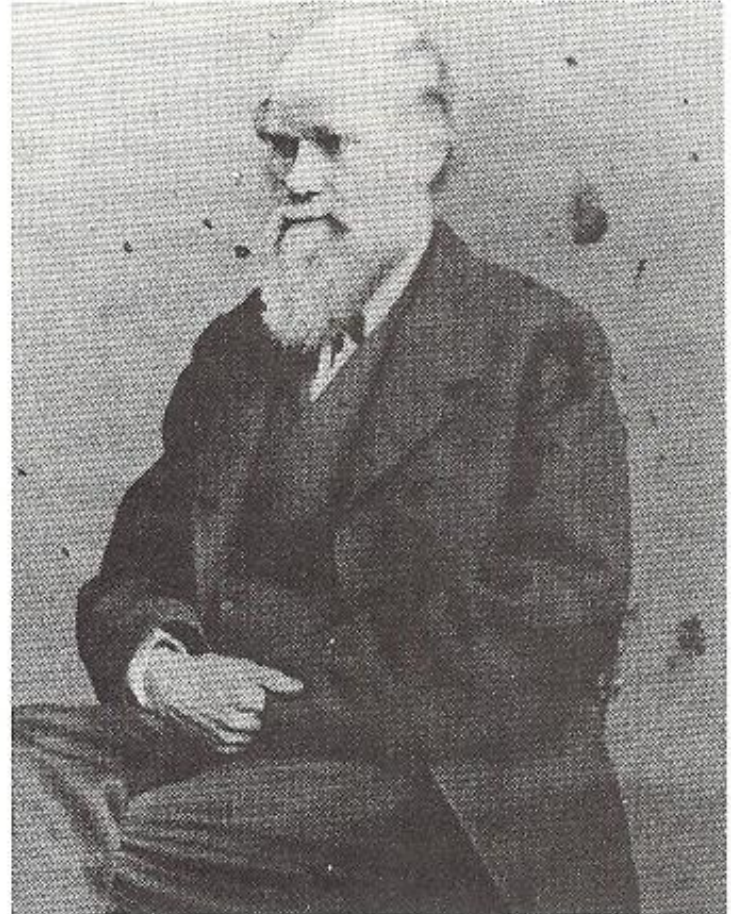
LONGMAN, BROWN, GREEN, LONGMANS &amp; ROBERTS,

AND

WILLIAMS AND NORGATE.

1858.

1 de julio (1858). Linnean Society



*Charles Darwin en un par estereoscópico de 1864*





•LATE AUTUMN•

