

FRA ANGELICO I

José Manuel Cruz Valdovinos

Fundación Juan March

24-V-2016





4

Ist mō
tē matris
reūsus ē. augusti
nus ad agros, p̄rios
ubi cū amicis ieu

A medieval manuscript page featuring a large, ornate initial 'I' decorated with blue, red, and green acanthus leaves. The initial contains a miniature of a seated figure, likely a saint or a ruler, holding a staff. To the right of the initial is musical notation on five-line staves. The text is written in a Gothic script. A small number '4' is visible on the left side of the page.









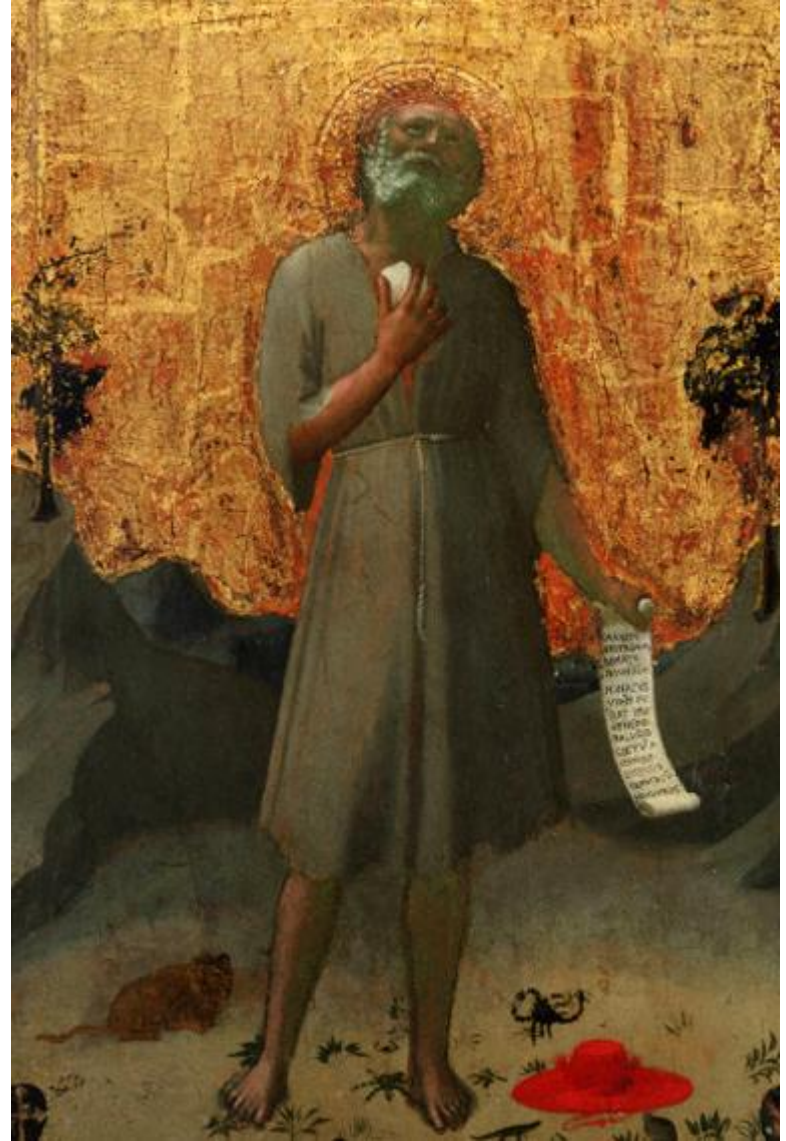


















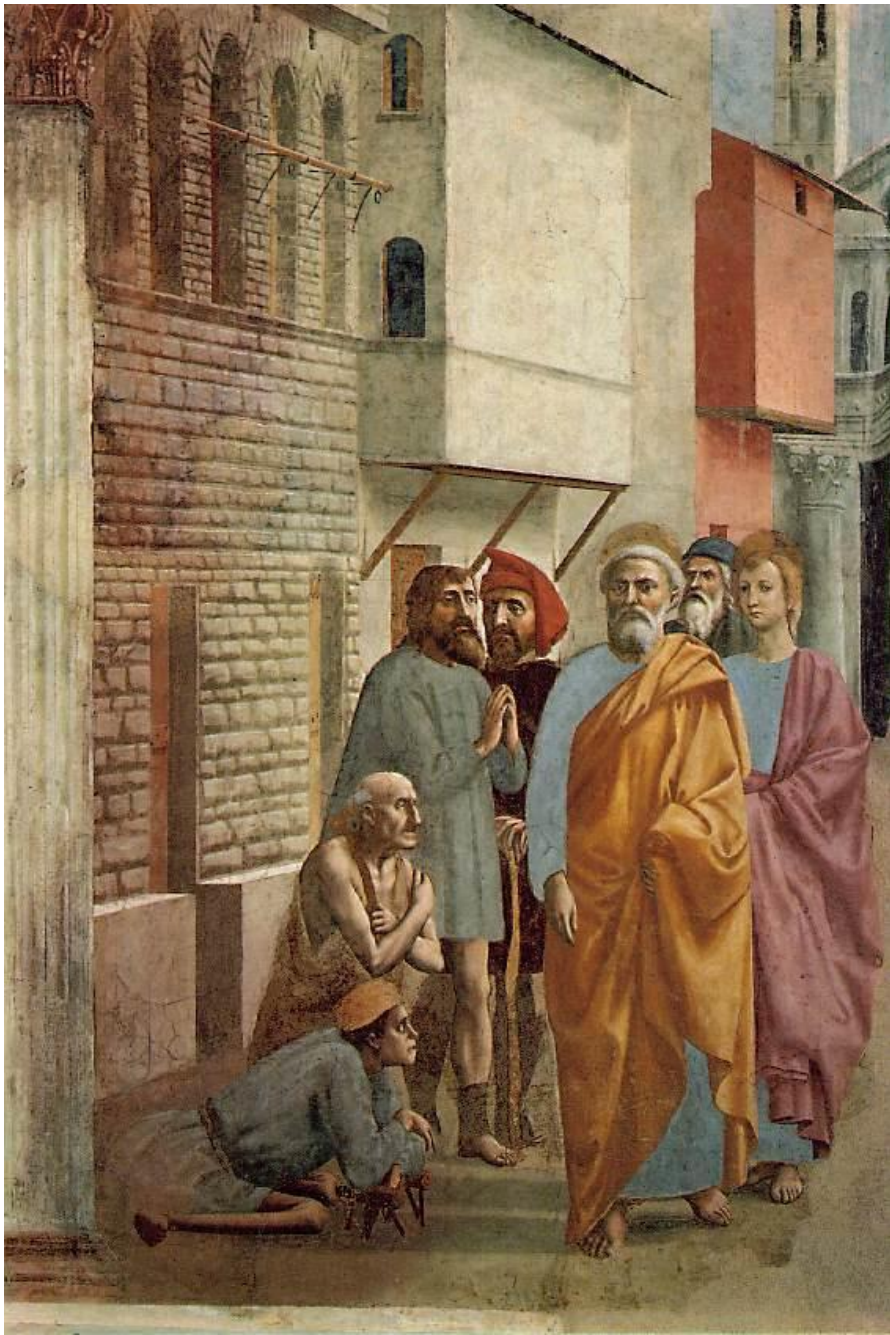








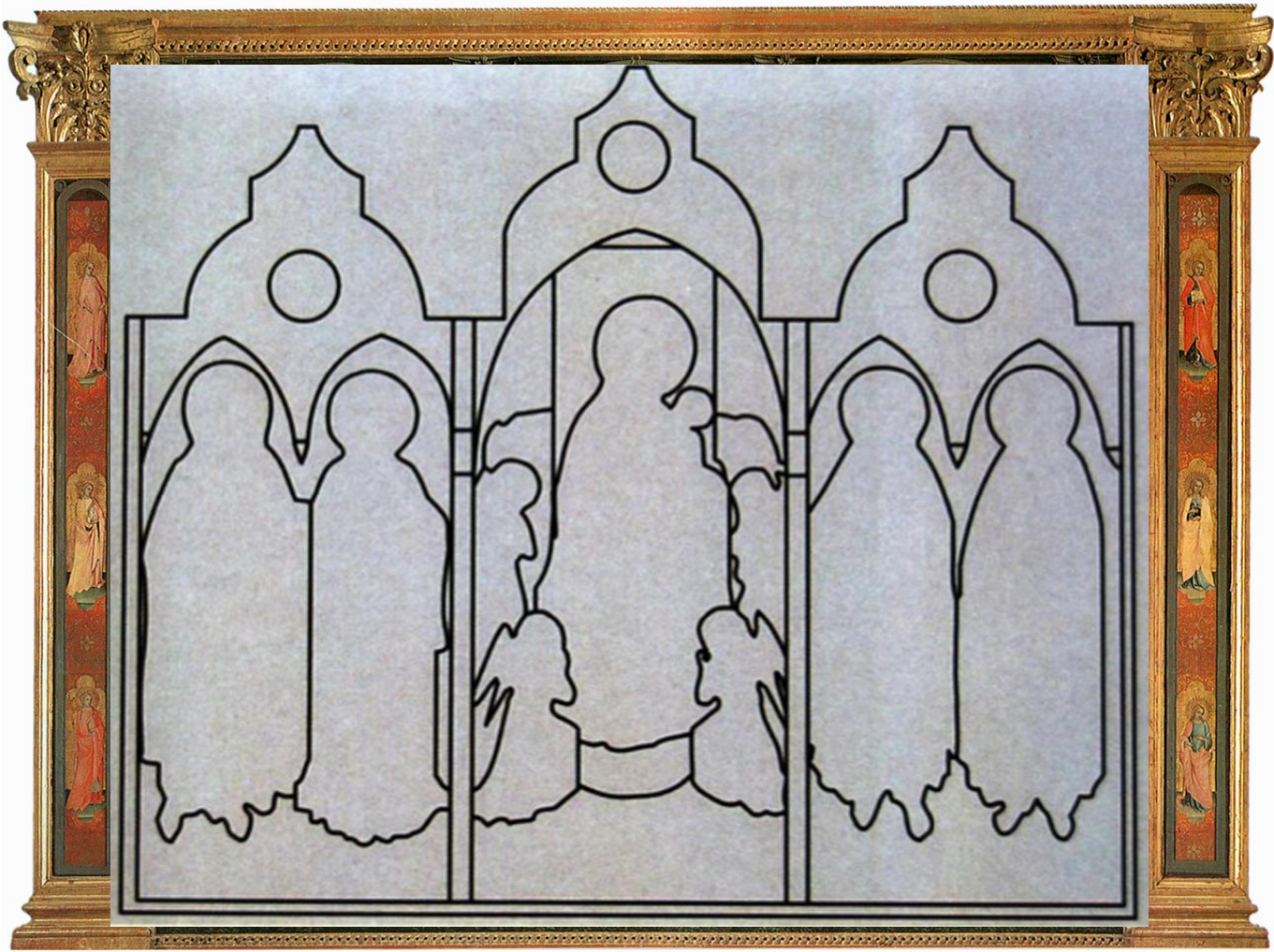
















SANCTUS DOMINICUS ET SANCTUS IOHANNES

SANCTUS PETRUS ET SANCTUS THOMAS

SANCTUS PETRUS ET SANCTUS THOMAS







AVE MARIA EGORATIA EP ENA DOINUS DE ME BENEDICTA TUA INVIERIAS CT PENENT ERVC D AVENTIS



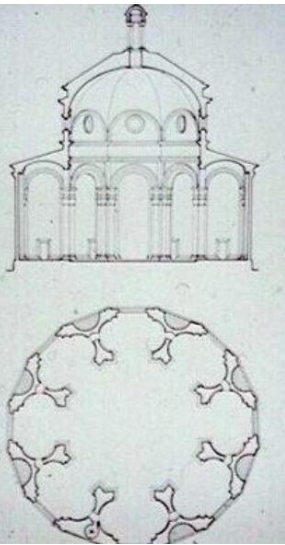




































SCIVIT LAMORIO CIVITISSO.





