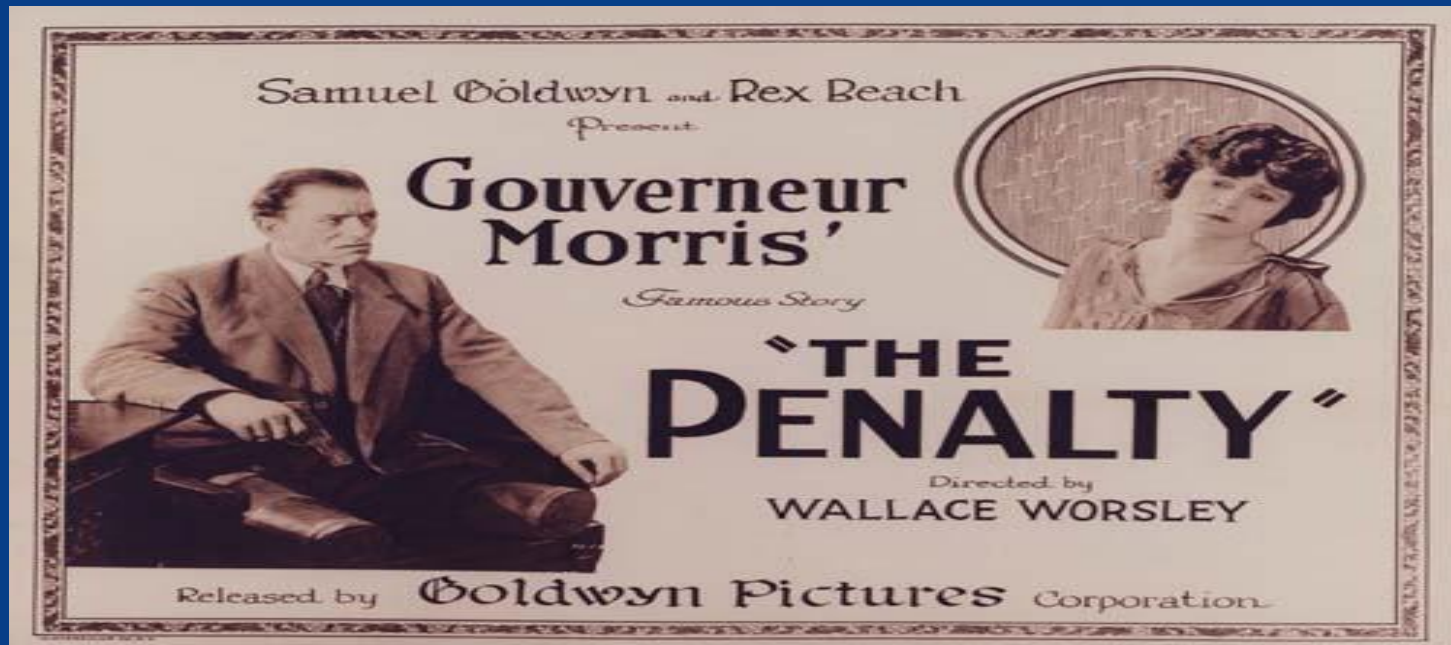


# *The penalty* (1920) Víctima del odio



Eduardo Rodríguez Merchán  
Catedrático de la Universidad Complutense

colección  
**CINE MUDO**



**LA MARCA  
DEL FUEGO**

FANNIE WARD · SESSUE HAYAKAWA · JACK DEAN  
JAMES NEILL · YUTAKA ABE · DANA ONG · HAZEL CHILDERS · ARTHUR H. WILLIAMS

Dirigida por CECIL B. DeMILLE

EDICIÓN ESPECIAL COLECCIONISTA

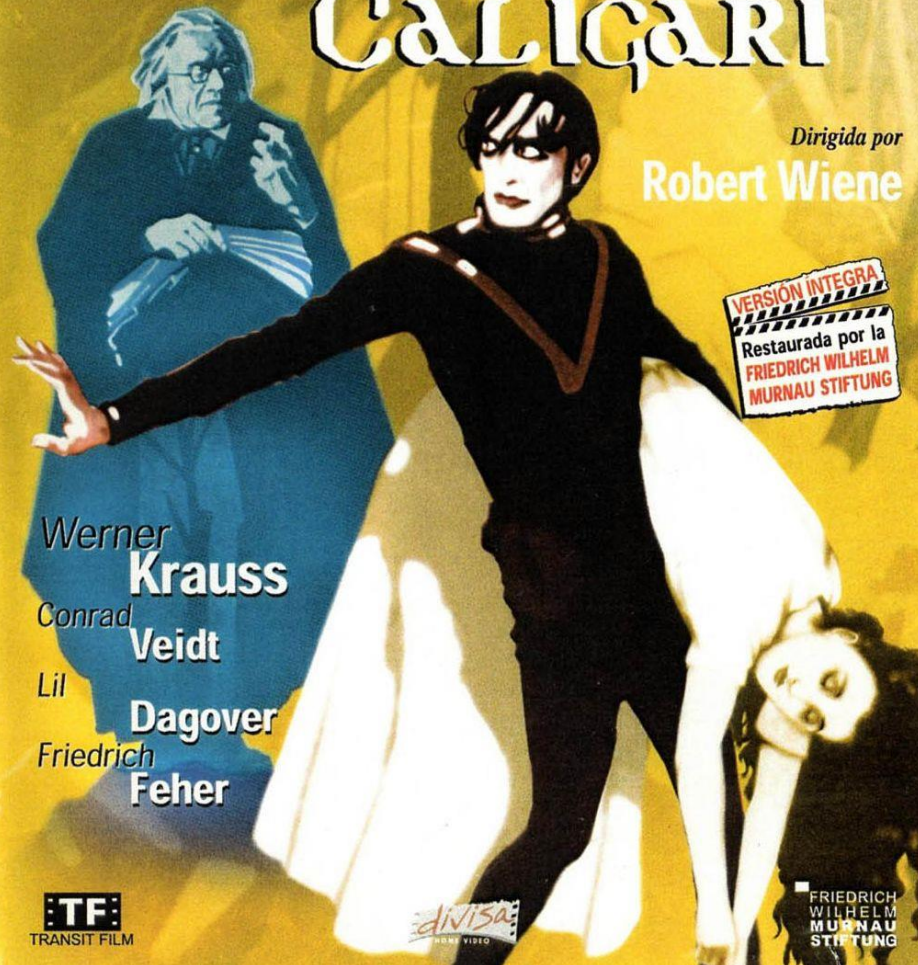
DVD  
VIDEO

ORÍGENES DEL CINE



EL GABINETE DEL  
**DOCTOR  
CALIGARI**

Dirigida por  
**Robert Wiene**



VERSIÓN INTEGRAL  
Restaurada por la  
FRIEDRICH WILHELM  
MURNAU STIFTUNG

Werner  
**Krauss**  
Conrad  
**Veidt**  
Lil  
**Dagover**  
Friedrich  
**Feher**

TF  
TRANSIT FILM

divisa  
DVD VIDEO

FRIEDRICH  
WILHELM  
MURNAU  
STIFTUNG

DELUXE COLLECTOR'S EDITION

BLU-RAY  
VIDEO

Samuel Goldwyn  
presents

LON  
CHANEY

in  
Wallace  
Worsley's

THE PENALTY

plus These Supplemental Features:

A Tour of Chaney's makeup case and PENALTY props  
Original Trailers • Rare Chaney Footage • Stills  
BY THE SUN'S RAYS: A Complete 1914 Short  
"Making of" Essay and More!

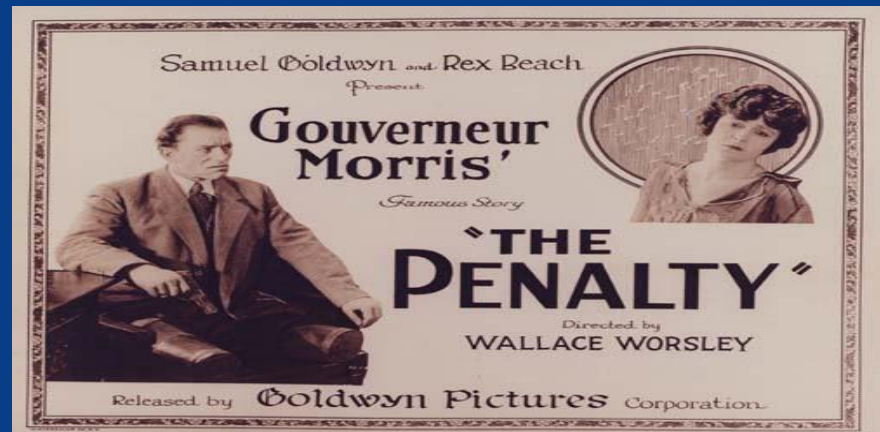




# Wallace A. Worsley

## Gouverneur Morris

### Lon Chaney



Jim Manson  
 Charles Clary  
 Claire Adams  
 Ethel Grey Terry  
 Kenneth Harland  
 Doris Pawn

STARTING  
SATURDAY  
JUNE 19

# Next Week

# LON CHANNEY

The Screen's Finest Actor—By  
Popular Demand, Returning in  
Another Great Characterization  
—In a Picture Crowded With  
Action and Life—

# "THE PENALTY"



AND ON THE STAGE

# THE ORIGINAL COON-SANDERS' KANSAS CITY NIGHT HAWKS

This Favorite Victor Record Jaccband—The  
Band That Made Radio Famous—Direct  
From Two Solid Years at the Hotel Con-  
gress of Chicago.

HART PRINTING CO. — 3685 OLIVE ST.

# LOEW'S STATE NEWSPLETTE

VOL. 2

ST. LOUIS, MO., JUNE 12, 1928

No. 48

# Lon Chaney in "The Penalty", Coon-Sanders' Original Kansas City Night Hawks Due Next Week



**Mrs. Feitelbaum**—You could believe me odder out, Mrs. Yifnif, if from in front a teespter pipple I didn't had almost population of de hott! Sotch faces—in mine whole life, narver deed I see sotch a face!

**Loeoy**—Why ya pickin' on Lon Chaney—how about Pop's face?

**Mr. Feitelbaum**—Doope, you! Kes does a respect for a foddler? Juks you making, huh? Batten you should get yat a job in a tees-pter from woddlerweel! Get away, odder beeg as you are, witt a telefun I'll geov you!

**Mrs. F.**—Shah! For, Mrs. Yifnif, a shame yat!  
**Mrs. Y.**—So wott was you was gonna say, Mrs. Feitelbaum?

**Mrs. F.**—From Lon Chaney, de actor, Kes does mek a actor! Someting moovevulus, Mrs. Yifnif! Witt de face can be make faces—you woddn't know set was born!

**Loeoy**—Sore, maybe it was two other fellas!

**Mrs. F.**—Loeoy! Don't make juks! So dem Chaney'll gonna be next wick by Loew's teespter, which you'll cointinly gotta see

(Turn to inside page, please)

## Forecasting the Show, With No Apologies to **MILT GROSS** OF THE POST-DISPATCH SUNDAY MAGAZINE

CAST OF CHARACTERS

**MR. FEITELBAUM**  
Movies—the Paps

**MRS. FEITELBAUM**  
The Mamma

**LOEOY**  
An Offspring — Second  
Largest Gem-for-Nation  
in United States — 75  
Years Old, But — Acts  
Younger.

**ISADORE**  
Another Offspring—Much  
Latter—Has Admoids.

**MRS. YIFNIF**  
A Neighbor



Samuel Goldwyn and Rex Beach  
present  
**THE PENALTY**  
RELEASED BY  
**GOLDWYN**  
PICTURES CORPORATION





GOUVERNEUR MORRIS

The great grandson of the famous Revolutionary statesman is one of the most prolific writers of short stories in America. He used to play tennis every day in the famous garden which alone the water separates from the rest of all the neighboring gardens. He has already published some volumes of stories. The photograph shows Mr. Morris in front of the house at Falmouth, one of his most beautiful homes in the New England.



Gouverneur Morris IV  
1876-1953



Gouverneur Morris  
Enero 31, 1752 – Nov. 6, 1816





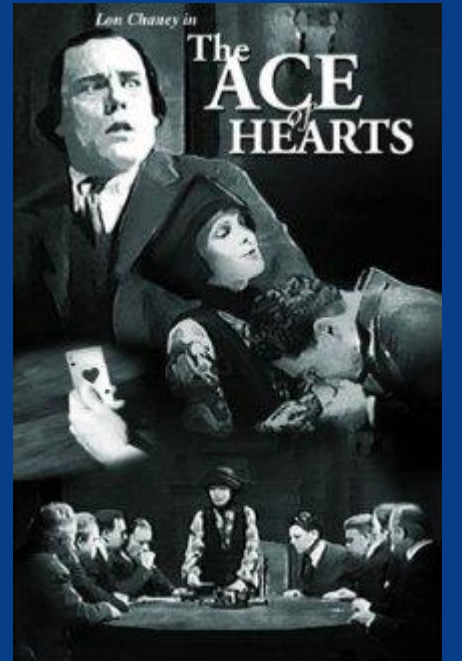


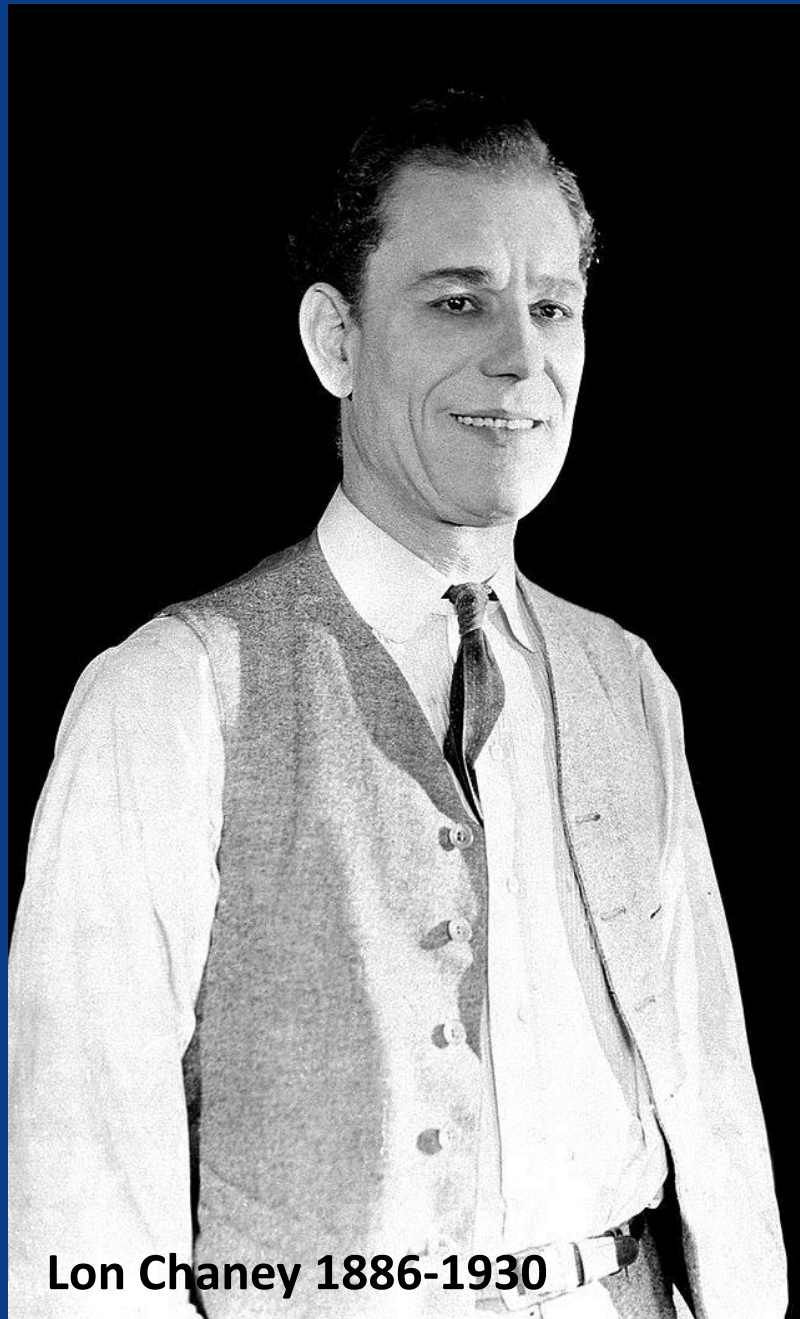
**Wallace A. Worsley (Wappingers Falls, New York)  
1878-1944**





505-2/3

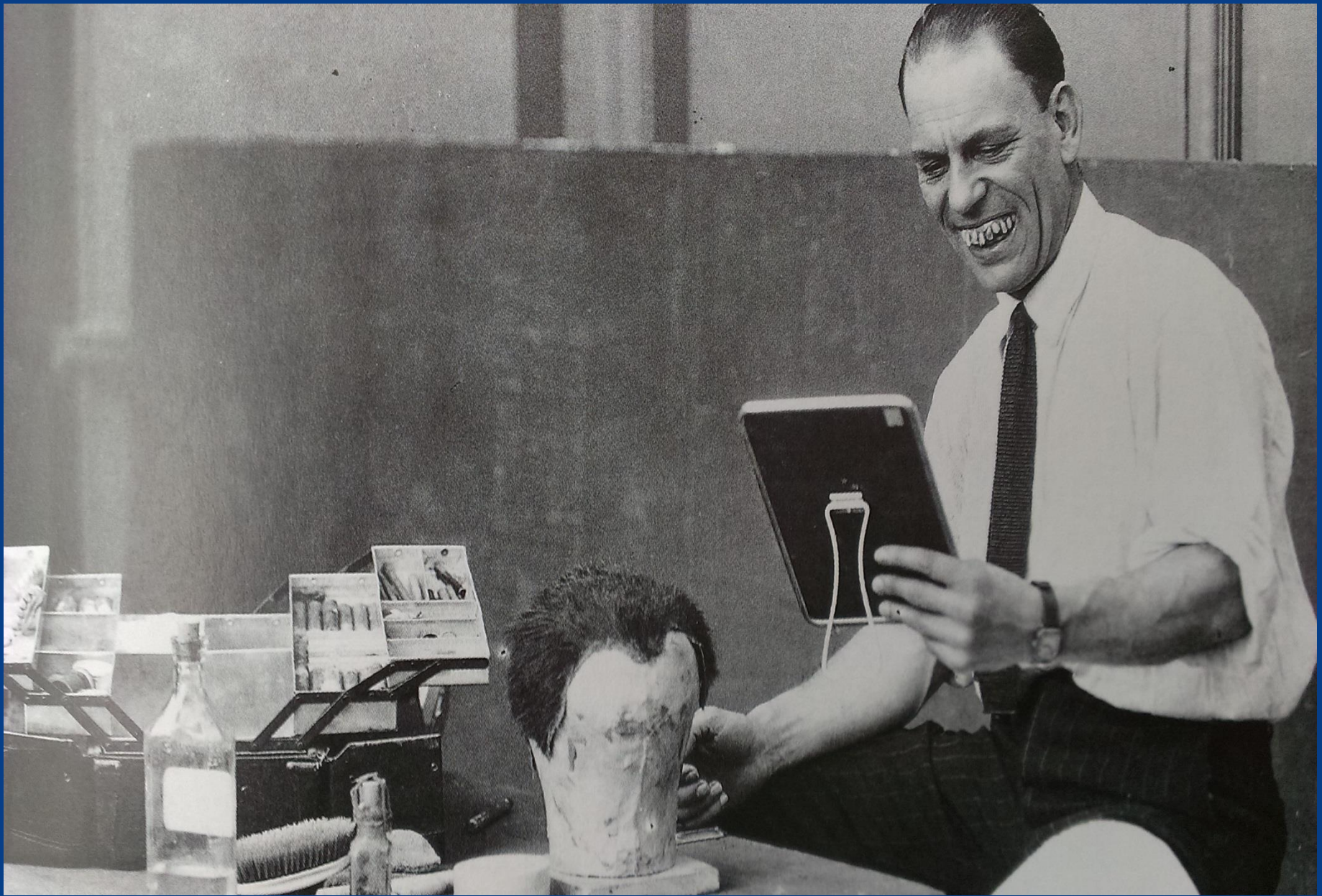


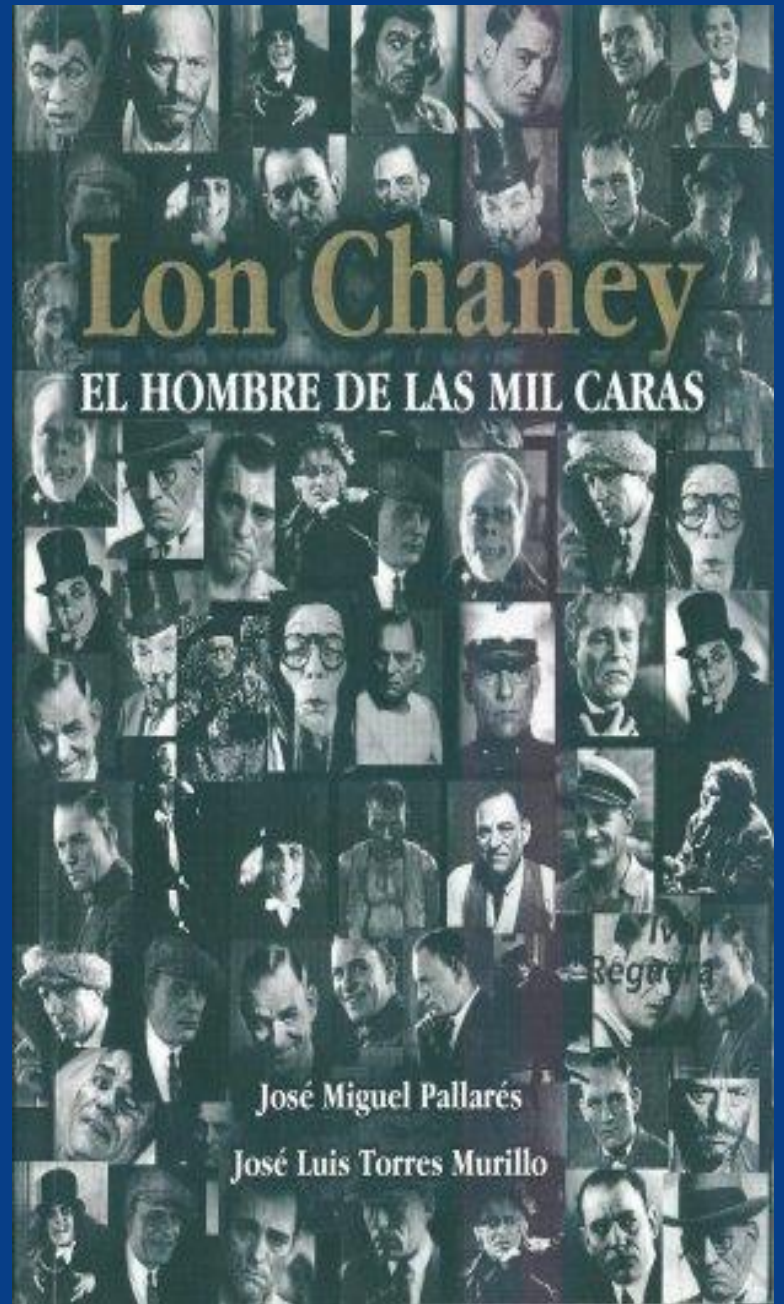
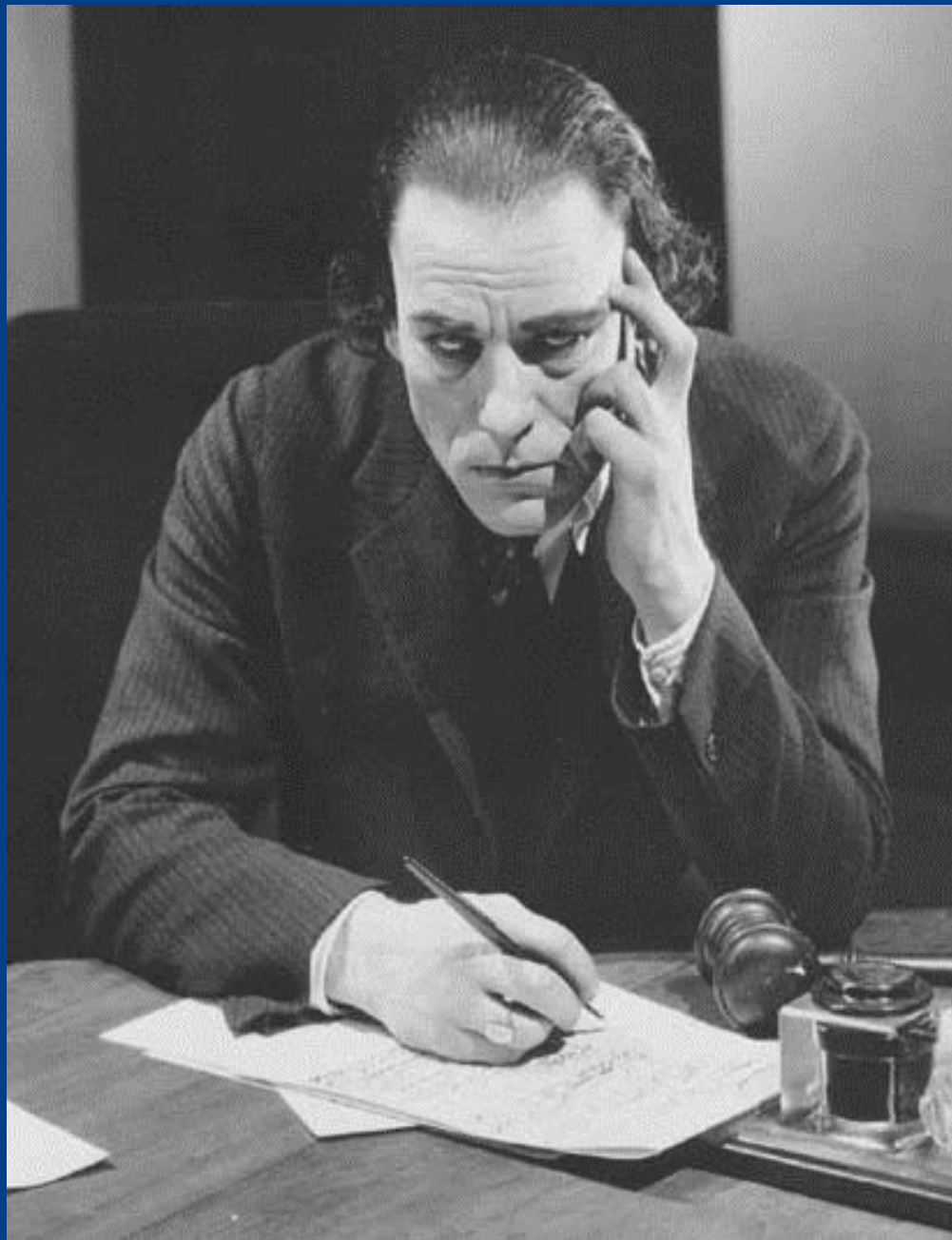


**Lon Chaney 1886-1930**



**LON CHANEY. 15.**



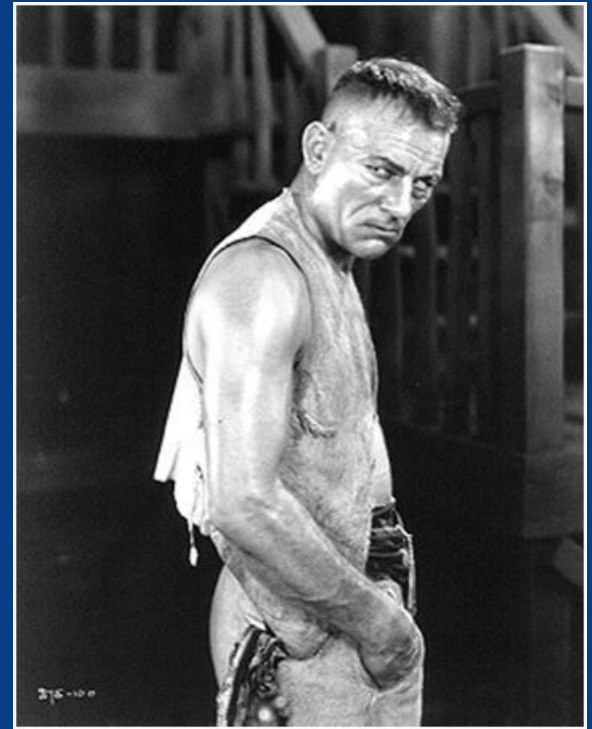




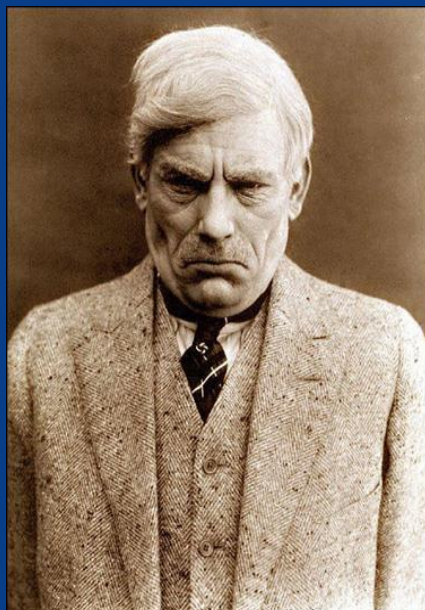
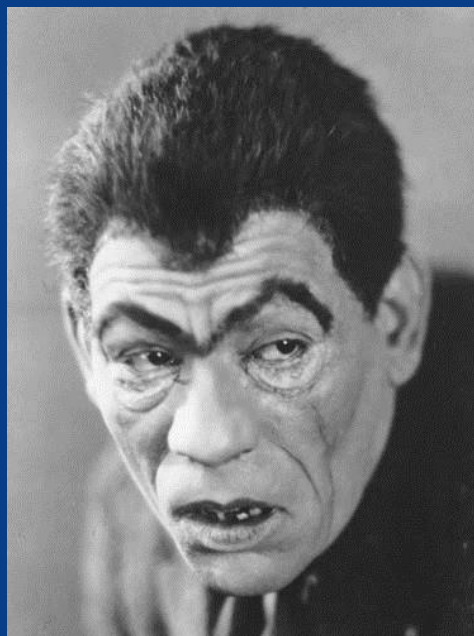
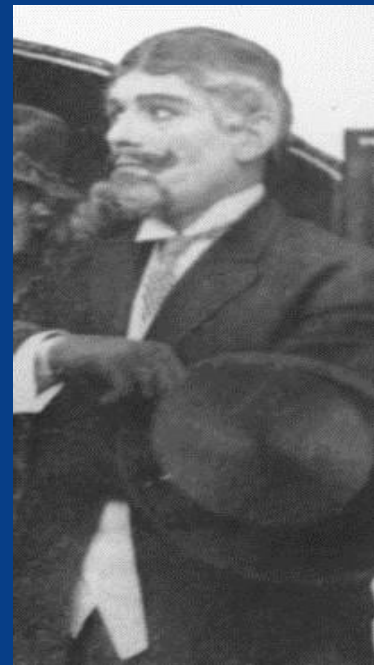
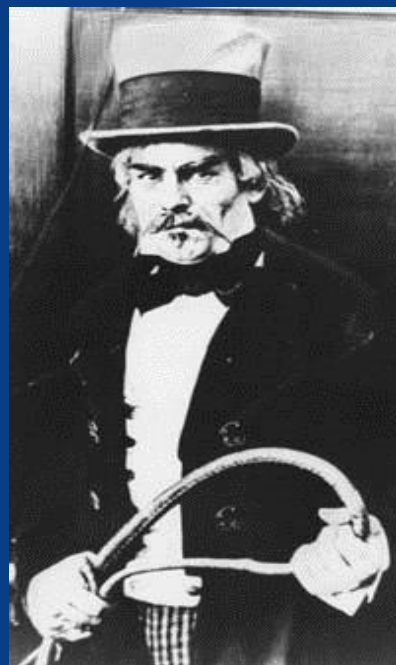
EL MALETIN DE  
MACUILLAJE DE LON

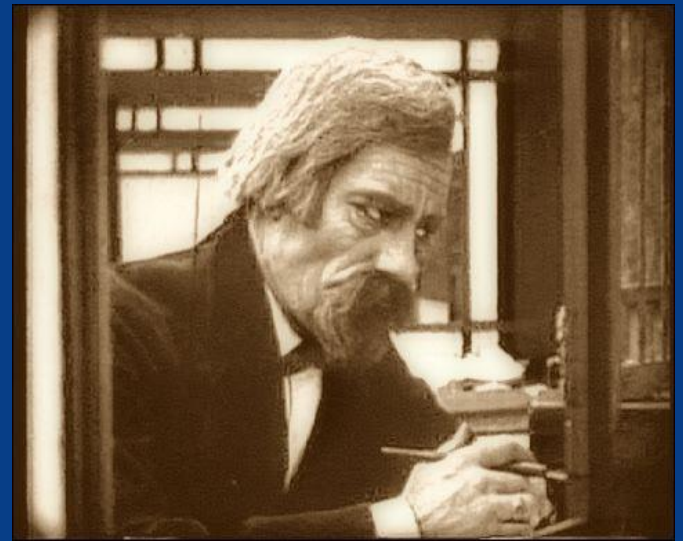
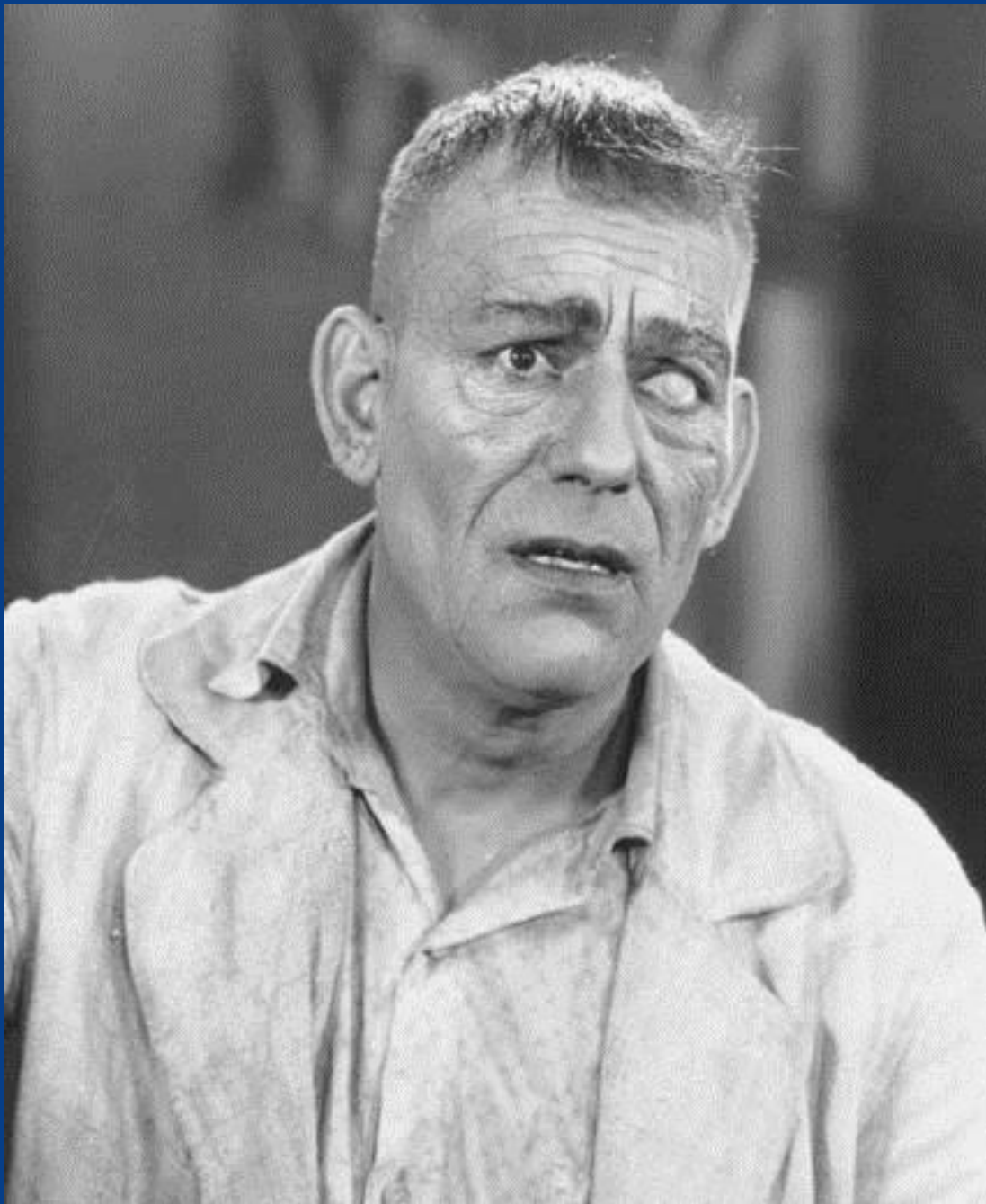




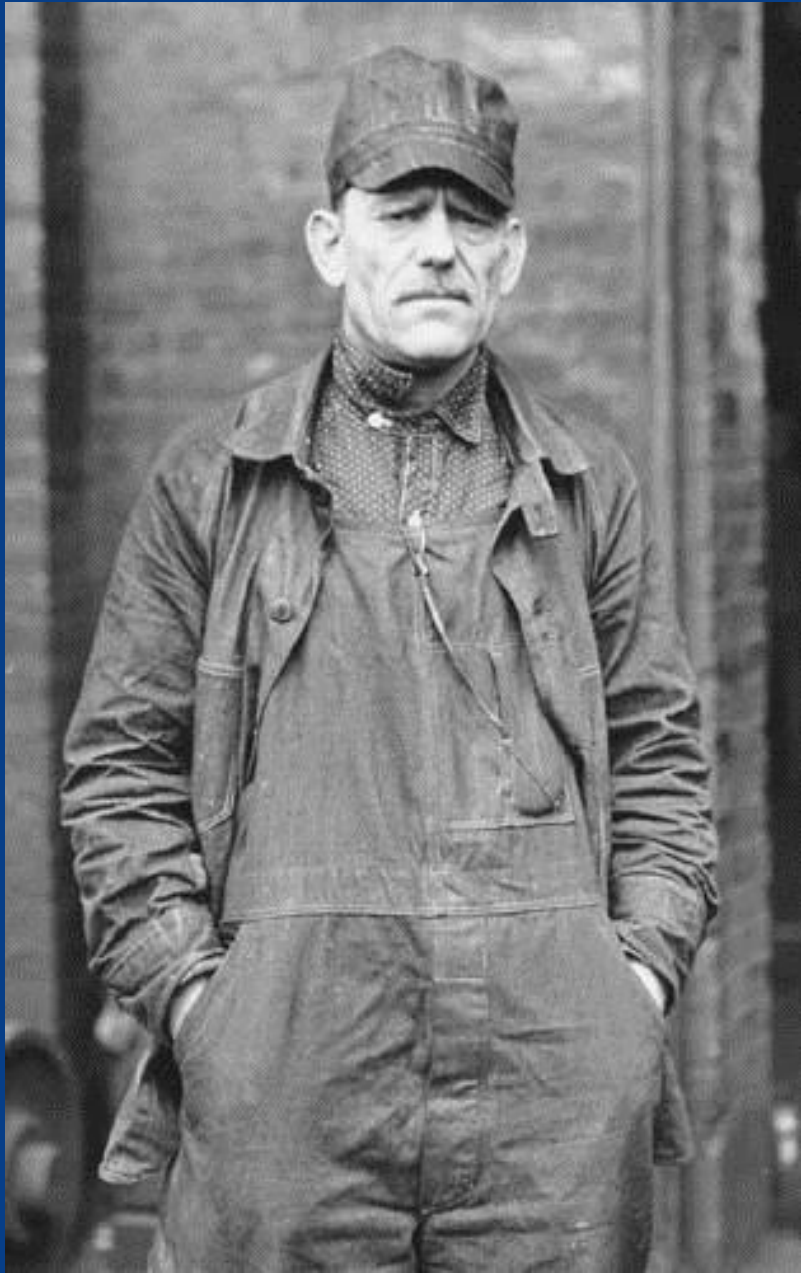


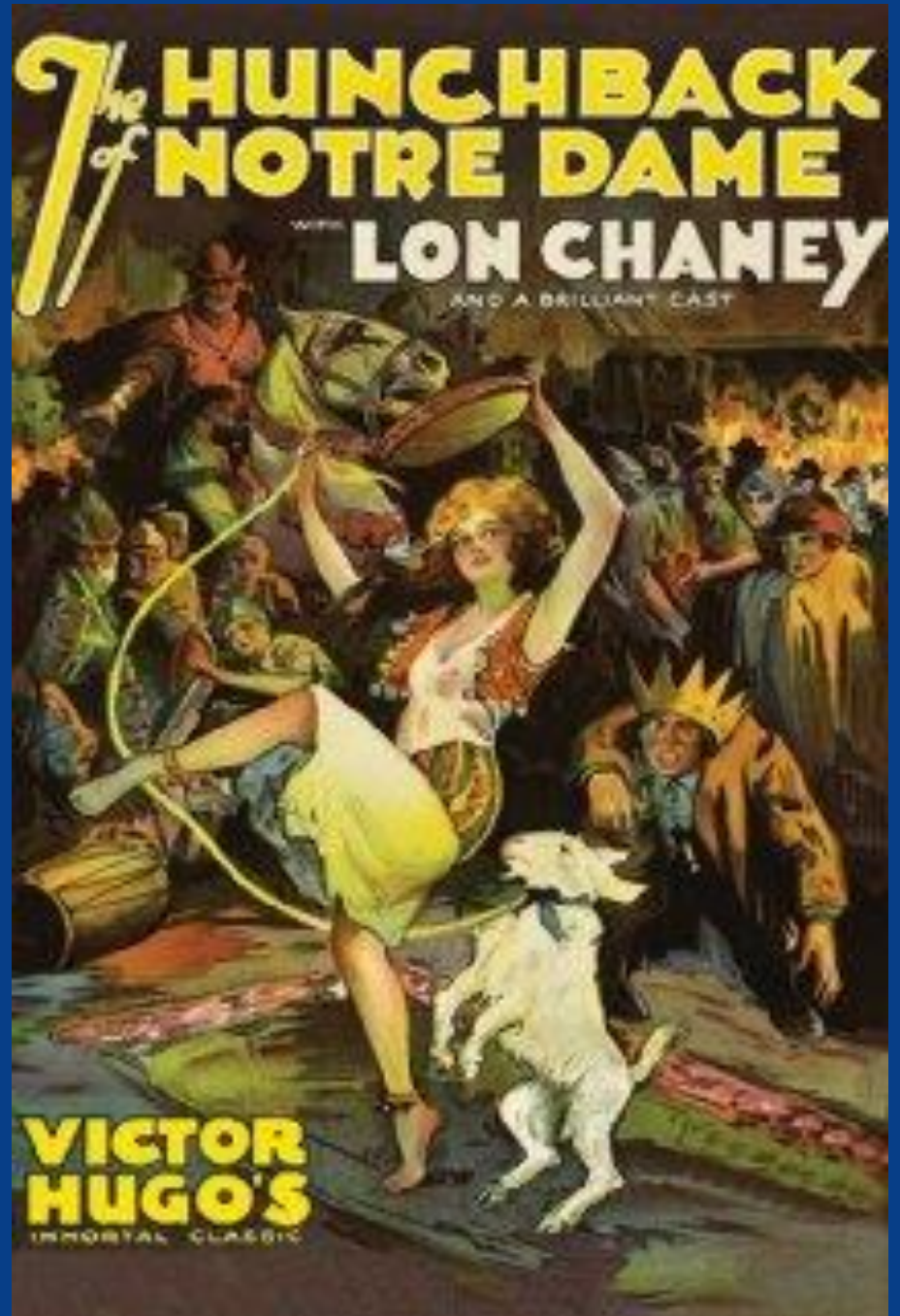














DELUXE COLLECTOR'S EDITION **REGNO VIDEO**


Samuel Goldwyn  
presents

# LON CHANEY

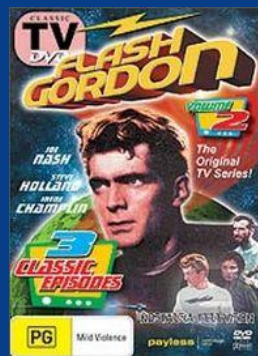
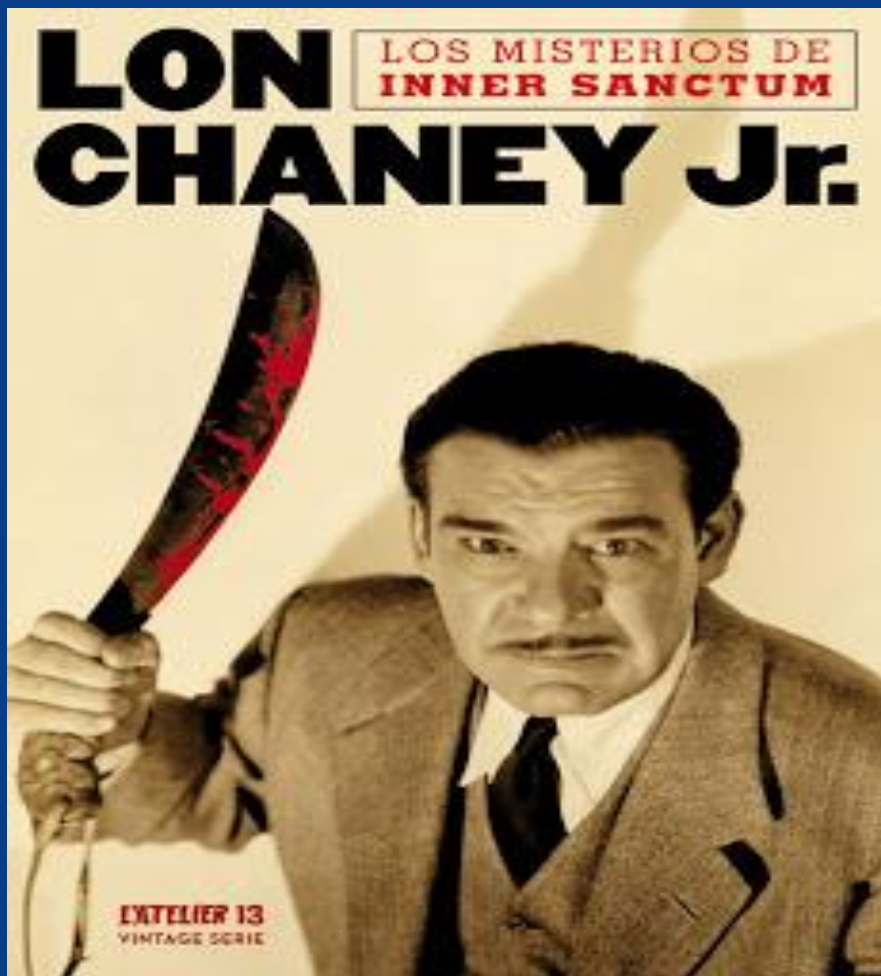
in  
Wallace Worsley's

# The PENALTY

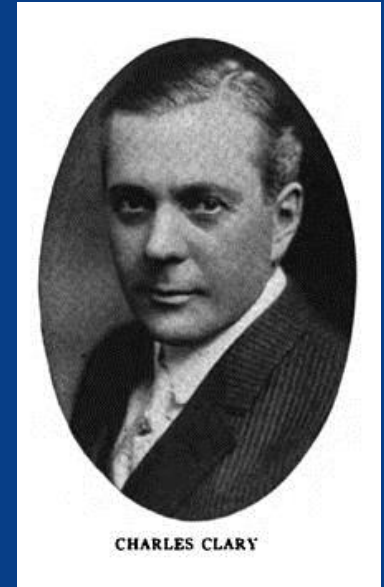
**Plus These Supplemental Features:**  
A Tour of Chaney's makeup case and PENALTY props  
Original Trailers • Rare Chaney Footage • Stills  
BY THE SUN'S RAYS: A Complete 1914 Short  
"Making of" Essay and More!







KENNETH HARLAND  
ETHEL GREY TERRY  
DORIS PAWN  
CLAIRE ADAMS  
CHARLES CLARY  
JIM MANSON





# LON CHANEY Puppet

IN 'THE PENALTY' LON CHANEY PLAYED A CRIPPLE WHOSE LEGS HAD BEEN AMPUTATED AT THE KNEES. HIS LEGS WERE BOUND TIGHTLY BEHIND HIM, GIVING A VERY CONVINCING PICTURE OF A MAN WITH STUMPS FOR LEGS. NOT CONTENT WITH JUST WALKING IN WHAT MUST HAVE BEEN SEVERE PAIN, CHANEY GAVE HIMSELF SCENES IN WHICH HE JUMPED FROM HEIGHTS AND LANDED ON HIS KNEES! \*

CONNECT ARMS 'A' AND 'B' TO HOLES 'X' AND 'B'. CONNECT STUMPS 'C' AND 'D' TO HOLES 'C' AND 'D'. CONNECT HEAD IN SAME WAY. USE SMALL BRADS OR PINS FOR A BULLETIN BOARD.

## THE PENALTY



























